

IP55



EN 54-24

Description

Suited to both indoor and outdoor use, the VERTUS CLA 403T features four 3" full range woofers. The VERTUS CLA 403T offers powerful new features for systems integrators facing challenging acoustic conditions. The column features an extruded aluminum construction and is characterized by an integrated passive directivity control system which delivers a consistent frequency-based vertical dispersion, and which offers users the choice of two angles, NARROW and WIDE, respectively 110°H x 25°V and 110°H x 50°V. The VERTUS CLA 403T is fully modular and include a 100V line transformer with switchable power levels, so multiple enclosures can be linked to increase low frequency control, high frequency dispersion and overall SPL.

The accessories match to the enclosures with sliding guides and integrated quick release pins for an exceptionally quick, easy and effective installation.

Functional features

Completely dustproof and waterproof, the enclosure's grille is covered with a special hydrophobic fabric to ensure absolute rejection of all atmospheric agents. Full EN 54-24 certification can be used for emergency and evacuation applications (in the event of a fire is equipped with a ceramic terminal block and thermal fuse). IP55 rating means suitable for outdoor installations. Ideal for fixed installations in reverberant environments where requiring heightened intelligibility of both music and voice.

Technical specifications

CONFIGURATION	1
RATED NOISE POWER (100hrs)	50W / 28.2 Vrms
RECOMMENDED AMPLIFIER	100W RMS
NOMINAL IMPEDANCE	16 Ohm
NOMINAL IMPEDANCE (100V line)	200 Ohm / 50 W 400 Ohm / 25 W
SENSITIVITY	91 dB (@1W/1m)
MAX SOUND PRESSURE SPL	106 dB / 94 dB (@1m/4m)
FREQUENCY RESPONSE	150 Hz - 20kHz (@ -6dB)
FULLRANGE DRIVER	4 x 3" / 0,75" coil
DISPERSION HORIZONTAL (-6dB) NARROW = WIDE setting	500Hz - 360° 1kHz - 170° 2kHz - 125° 4kHz - 125° 8kHz - 100°
DISPERSION VERTICAL (-6dB) WIDE setting	500Hz - 160° 1kHz - 70° 2kHz - 36° 4kHz - 22° 8kHz - 20°
DISPERSION VERTICAL (-6dB) NARROW setting	500Hz - 160° 1kHz - 70° 2kHz - 28° 4kHz - 14° 8kHz - 9°

COLUMN LINE ARRAY

Black or white finish

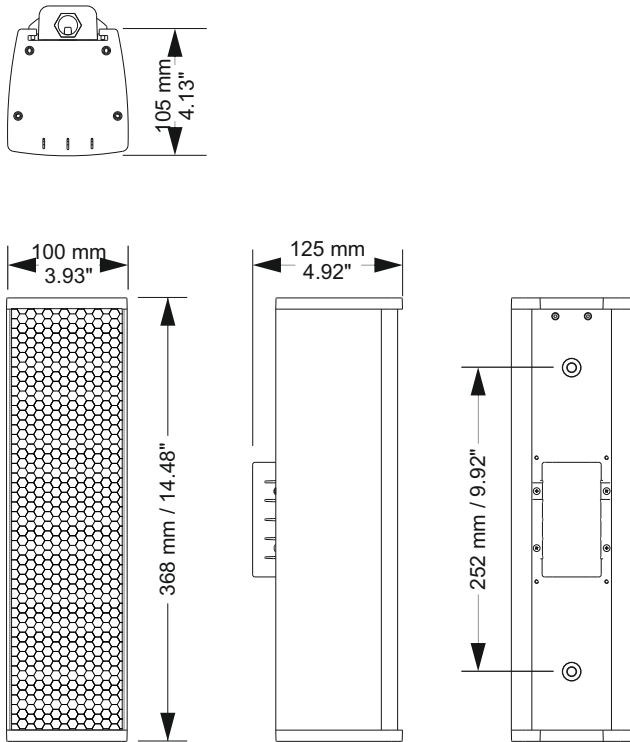


INPUT CONNECTOR	ceramic terminal block
OPERATING / STORAGE TEMPERATURE	-25°C + +55°C / -40°C + +70°C
RELATIVE UMIDITY	< 95%
NET DIMENSIONS	100 x 368 x 125 mm 3,93" x 14,48" x 4,92"
TRANSPORT DIMENSIONS	160 x 420 x 180 mm 6,29" x 16,53" x 7,08"
NET WEIGHT	3 kg 6,61 lb
TRANSPORT WEIGHT	3,5 kg 7,71 lb

Acoustical measurement environment used for the specifications listed in this table are made in free field condition

EXTERNAL PROCESSING IS RECOMMENDED TO IMPROVE SOUND BALANCE AND RELIABILITY OF THE TRANSDUCERS; SETTINGS AVAILABLE ON FBT WEBSITE PRODUCTS PAGE.

Dimensional drawing



Rear Panel



Accessories

Flying bar for suspended installation



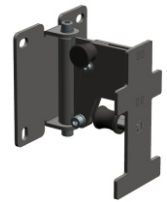
VT-F3

Directional wall mount for horizontal installation
0° / 5° / 10° / 15° / 20°



VT-WH3

Directional wall mount for vertical installation
-10° / -5° / 0° / 5° / 10°



VT-W3

Directional joint from 0° to 15° for fixing
two or more columns together
0° / 5° / 10° / 15°



VT-J3

Fixed joint for fixing two or more columns
to each other



VT-JF3

Clamp for attachment to trellis



VT-T3

Model	Weight
CLA 403T	3 kg / 6,61 lb
VT-F3	0,5 kg / 1,10 lb
VT-WH3	0,7 kg / 1,54 lb
VT-W3	0,8 kg / 1,76 lb
VT-J3	0,6 kg / 1,32 lb
VT-JF3	0,4 kg / 0,88 lb
VT-T3	0,5 kg / 1,10 lb

FBT

IP55 

VERTUS CLA 803T

EN 54 - 24

EN54-24:2008 Cert. Nr. 0068-CPR-142/2020

Declaration of Performance (DoP) available on the website www.fbt.it

Description

Suited to both indoor and outdoor use, the VERTUS CLA 803T features eight 3" full range woofers. The VERTUS CLA 803T offers powerful new features for systems integrators facing challenging acoustic conditions. The column features an extruded aluminum construction, and is characterized by an integrated passive directivity control system which delivers a consistent frequency-based vertical dispersion, and which offers users the choice of two angles, NARROW and WIDE, respectively 110°H x 15°V and 110°H x 40°V. The VERTUS CLA 803T is fully modular and include a 100V line transformer with switchable power levels, so multiple enclosures can be linked to increase low frequency control, high frequency dispersion and overall SPL.

The accessories match to the enclosures with sliding guides and integrated quick release pins for an exceptionally quick, easy and effective installation.

Functional features

Completely dustproof and waterproof, the enclosure's grille is covered with a special hydrophobic fabric to ensure absolute rejection of all atmospheric agents. Full EN 54-24 certification can be used for emergency and evacuation applications (in the event of a fire is equipped with a ceramic terminal block and thermal fuse). IP55 rating means suitable for outdoor installations. Ideal for fixed installations in reverberant environments where requiring heightened intelligibility of both music and voice.

Technical specifications

CONFIGURATION	1
RATED NOISE POWER (100hrs)	100W / 28.2 Vrms
RECOMMENDED AMPLIFIER	200W RMS
NOMINAL IMPEDANCE	8 Ohm
NOMINAL IMPEDANCE (100V line)	100 Ohm / 100 W 200 Ohm / 50 W
SENSITIVITY	94 dB (@1W/1m)
MAX SOUND PRESSURE SPL	112 dB / 100 dB (@1m/4m)
FREQUENCY RESPONSE	150 Hz - 20kHz (@ -6dB)
FULLRANGE DRIVER	8 x 3" / 0,75" coil
DISPERSION HORIZONTAL (-6dB) NARROW = WIDE setting	500Hz - 360° 1kHz - 170° 2kHz - 125° 4kHz - 125° 8kHz - 100°
DISPERSION VERTICAL (-6dB) WIDE setting	500Hz - 70° 1kHz - 35° 2kHz - 26° 4kHz - 26° 8kHz - 20°
DISPERSION VERTICAL (-6dB) NARROW setting	500Hz - 70° 1kHz - 35° 2kHz - 18° 4kHz - 10° 8kHz - 10°

INPUT CONNECTOR	ceramic terminal block
OPERATING / STORAGE TEMPERATURE	-25°C + +55°C / -40°C + +70°C
RELATIVE UMIDITY	< 95%
NET DIMENSIONS	100 x 704 x 125 mm 3,93" x 27,69" x 4,92"
TRANSPORT DIMENSIONS	160 x 760 x 180 mm 6,29" x 29,92" x 7,08"
NET WEIGHT	5,5 kg 12,12 lb
TRANSPORT WEIGHT	6,2 kg 13,66 lb

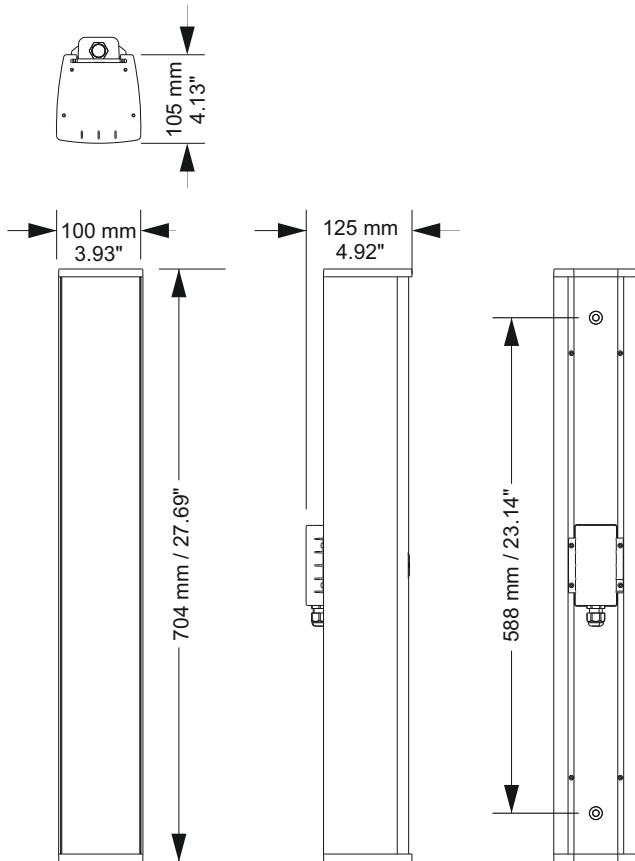
Acoustical measurement environment used for the specifications listed in this table are made in free field condition

EXTERNAL PROCESSING IS RECOMMENDED TO IMPROVE SOUND BALANCE AND RELIABILITY OF THE TRANSDUCERS; SETTINGS AVAILABLE ON FBT WEBSITE PRODUCTS PAGE.



Black
or
white
finish

Dimensional drawing



Rear Panel



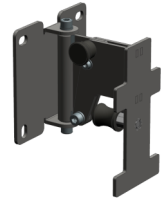
Accessories

Flying bar for suspended installation



VT-F3

*Directional wall mount for vertical installation
-10° / -5° / 0° / 5° / 10°*



VT-W3

*Directional joint from 0° to 15° for fixing
two or more columns together
0° / 5° / 10° / 15°*



VT-J3

*Fixed joint for fixing two or more columns
to each other*



VT-JF3

Clamp for attachment to trellis



VT-T3

Model	Weight
CLA 803T	5,5 kg / 12,12 lb
VT-F3	0,5 kg / 1,10 lb
VT-WH3	0,7 kg / 1,54 lb
VT-W3	0,8 kg / 1,76 lb
VT-J3	0,6 kg / 1,32 lb
VT-JF3	0,4 kg / 0,88 lb
VT-T3	0,5 kg / 1,10 lb