

Contents

Materials needed 1

Overview 1

ella Box Setup..... 2

Troubleshooting 6

Materials needed



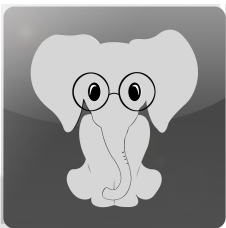
Ella Box w/ Power Supply and Cat5/6 cable



Cat5/6 cable



Supported IP Camera or NVR



Ella account @ www.smartella.com

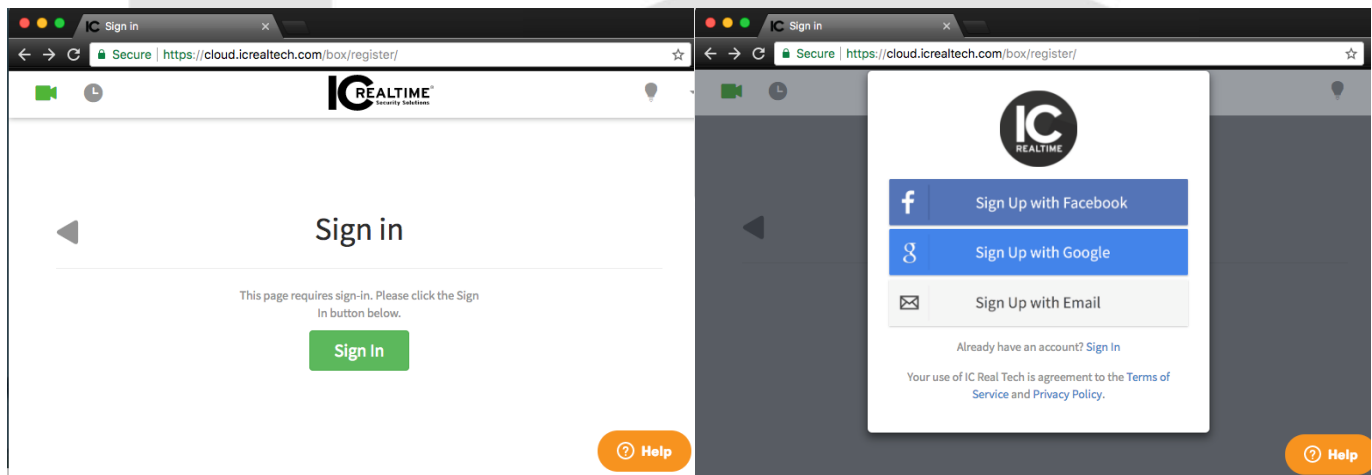
Overview

This aim of this guide is to instruct on the proper installation and deployment of the Ella Box smart video gateway appliance. While the setup of the device itself may seem straight forward to some, there are absolutely best practices to abide by when installing this device. Please note this device does require a user account with Ella, the cloud based video analytic search engine. The first steps of this guide will cover this registration process.

Ella Box Setup

Step 1: Begin by visiting the registration URL to start the process. At the time of this writing, the URL to register a new Ella box is <https://cloud.icrealtech.com/box/register/>. Once you have navigated to this page you will be prompted to 'Sign In' as you do not have a current account for the Ella service. Click on 'Sign In' and then 'Sign Up' – you will be prompted with 3 different registration methods (Facebook, Google, or Email registration). You should see an interface as below.

Pick the registration method of your choosing and complete the registration process. Once your account is registered, you can proceed to 'Sign In' with your newly created account.



The initial Sign In / Registration page for the Ella service. Ella is a cloud connected service and requires the use of an account. Facebook and Google accounts, while supported, are not necessary to utilize this service. You can simply register with your Email if you do not wish to connect Facebook or Google with Ella.

Step 2: Once your account has been successfully registered, we are ready to physically connect the Ella box device.

There are two connections that need to be made to the Ella Box device. First, connect the Ethernet cable that is included with the box. It should connect to the Ella Box on one end, and to the network switch / router on the other end. Please note that the Ella Box **is designed to connect to the same local network as the IP Camera / NVR is.**

Next, connect the power supply to a power outlet on one end and then connect the plug end into the Ella Box. The box will power up at this point (please note, Box Pro users will need to press the Power button on the front to start the device).

Your device should have the two connections as pictured below.



Pictured above is the connections for the Box Pro. On the left is the Ethernet cable, and the right is the DC Plug which connects to the power supply. Box Pro Users note – you must use the Ethernet card on the left side and not the second blocked port.

Step 3: Once the Ella Box has been connected, you can proceed to the registration page @ <https://cloud.icrealtech.com/box/register> . Assign a **Name** to the new Box, and input the **Mac Address** of the Box. This should be on the Registration sticker that is included with your Box device when you open the package. You should see the registration and sticker as pictured below.

00:E0:2F: : :

00:E0:2F:1E:DF:EF



Questions?
cloud.icrealtech.com/help

cloud.icrealtech.com/box/register

Welcome

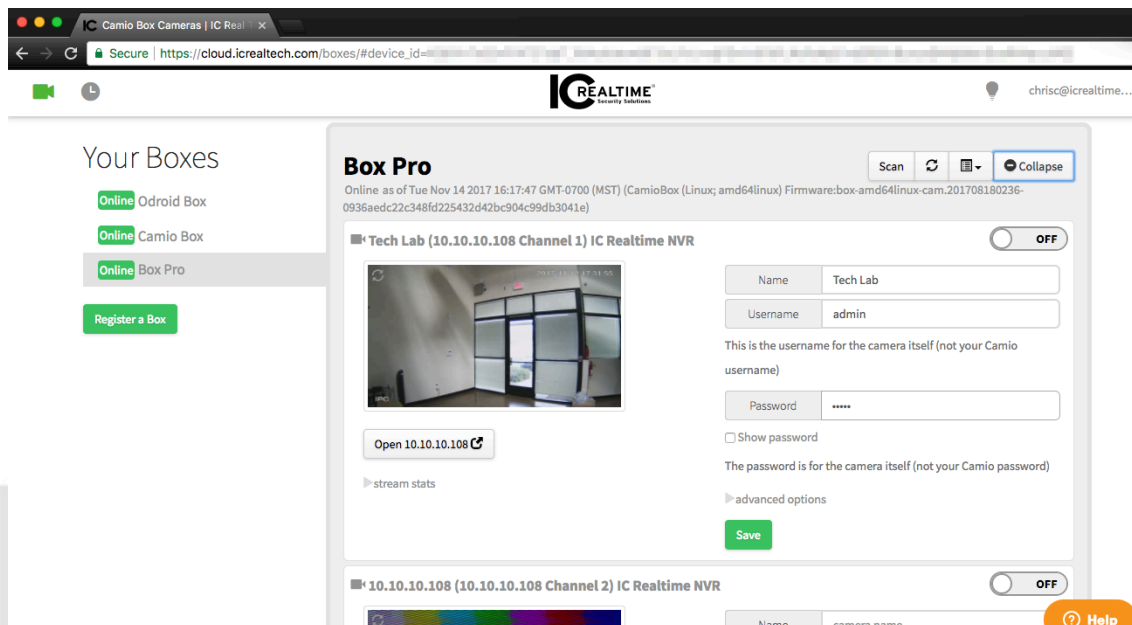
1. Plug the AC power adapter into the side of the Camio Box.
2. Connect the Ethernet cable from your router to the Camio Box.
3. Scan this QR code with your phone to open cloud.icrealtech.com/box/register in your Web Browser to complete the setup.

firmware:
box-amd64linux-cam.201711032307-38faac6a090e64f771124aff83dc5b2ce96446e7

Camio Box
00:E0:2F: : :

Pictured on the left is the initial Box registration page. On the right is the Box Registration label that is included with the package. You can actually use your mobile device to scan the QR code in order to fast track the registration process!

Step 4: Once you click `Register`, Box will begin to scan your local network. This will take several moments to complete – if you'd like to, or if you're on a larger network with many devices, you can **Skip** this process to move right to the next step to discover and connect video streams.

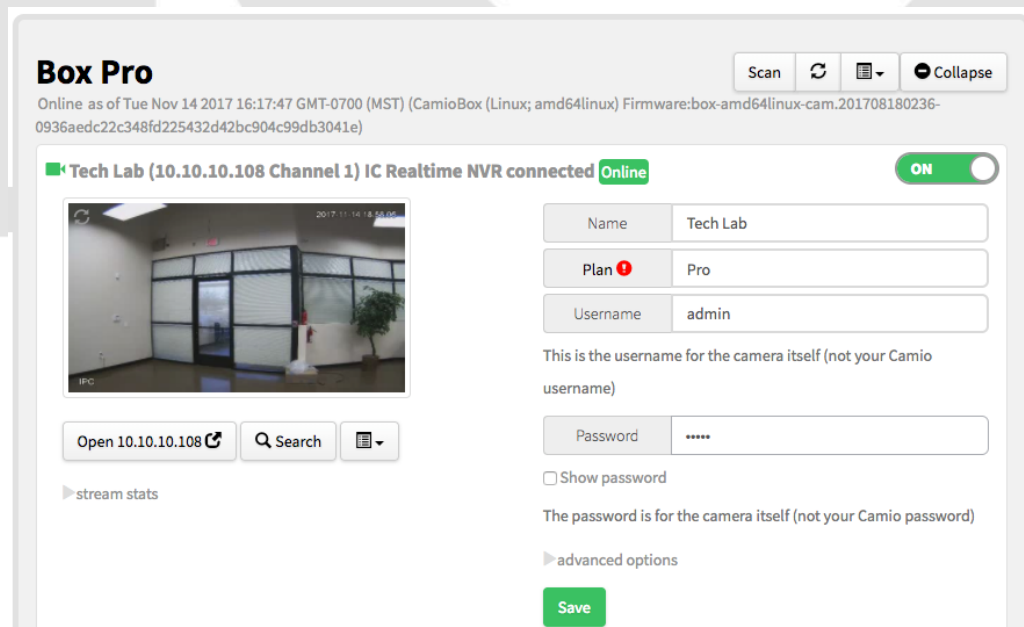


Once you have registered your Box, the Boxes page will return a list of all automatically detected and available camera streams from your local network. To begin recording cameras to the Ella service, all you need to do is turn the stream **ON**, pick a **Plan**, and **Save** the settings.

Step 5:

Cameras that have been automatically detected by the Ella Box will be listed and displayed on the Right side of the boxes page. Depending on the make and model of your camera device, you may not see it automatically recognized as a camera type device – if so, you can try to manually add your camera using the **Advanced Options** which will be explained later.

To start recording for a specific camera that has been automatically detected, set the rocker switch to 'On', set a **Name** for the channel that you wish to have it searched by, input your **Username** and **Password** for the camera. Lastly, pick a **plan** for the camera depending on the features you would like to utilize and hit **Save** at the bottom of the window.



The **Plan** essentially determines how 'Smart' your camera stream will be. The **Pro** plan allows for Object Recognition, Vehicle Type, Vehicle Manufacturer, and Optical Character Recognition. The **Basic** plan is event recording only.

Step 6:

There are cases where you may need to add a stream to your Box however it is not detected. These reasons typically include:

- Your camera is not on the same subnet as the Ella Box is
- Your camera does not have a recognized MAC address of well known devices
- You are adding an RTSP stream from a device that is not a typical CCTV camera

If this is the case, you can scroll to the bottom of the list and click '**Add Camera (expert Mode)**'. Input the **MAC Address**, click **Next**, then assign a **Name** for the camera as well as the **Username** and **Password**. Once this is filled out, expand **Advanced Options** to fill in the **RTSP Path**, **Server**, and **Static IP**.


RTSP Path is the tail of the RTSP Query String. IE: If your RTSP string is `rtsp://192.168.1.108/live`, you would fill in `/live` for the Path.

RTSP Server is the head of the RTSP Query string, with the credentials embedded in the URL. IE: If your camera is at 192.168.1.108 and has a user/pass of admin/admin, you would fill in `rtsp://admin:admin@192.168.1.108`

Static IP is the IP Address of the camera itself.

Sample Advanced Camera

OFF



Name

Sample Advanced Camera

Username

admin

This is the username for the camera itself (not your Camio username)

Password

.....

☐ Show password

The password is for the camera itself (not your Camio password)

▼ advanced options

RTSP Path

/cam/realmonitor?channel=1&subtype=0

RTSP Server

rtsp://admin:admin@192.168.1.108

Static IP

192.168.1.108

Static IP should be empty *unless* the camera and this Box are on different subnets. [Learn more.](#)

Save

mac: 010203040506

Once the settings are filled out in the Advanced Settings of Expert Mode, you can **Save** and click the circular refresh icon on top of the video window to test and review that the stream is reachable.

Troubleshooting

- If your stream is not displaying on the **Boxes** page, you can click on **Stream Stats** to see details about the reachability of your camera. You can also click **See More** to get advanced technical details.
- Once your cameras are paired to your box, you can test and view the stream by visiting the Live view page at <https://cloud.icrealtech.com/app/#live>

For a more detailed setup on configuring zones, setting up notifications or sharing content, please see our other Quick Start Guides.



IC Realtime LLC

www.icrealtime.com

3050 N Andrews Avenue Extension | Pompano Beach, FL 33064 | (866) 997-9009
Designs and specifications subject to change without notice. Copyright © 2015 IC Realtime, LLC. All rights reserved.