

# Pro.2

## H.265 HD HDMI Decoder for IP TV

Model: HE04

### OPERATION MANUAL



Thank you for purchasing this product. For optimum performance and safety, please read these instructions carefully before connecting, operating or adjusting this product. Please keep this manual for future reference.

## **SAFETY PRECAUTIONS**

Please read all instructions before attempting to unpack, install or operate this equipment and before connecting the power supply.

Please keep the following in mind as you unpack and install this equipment:

- Always follow basic safety precautions to reduce the risk of fire, electrical shock and injury to persons.
- To prevent fire or shock hazard, do not expose the unit to rain, moisture or install this product near water.
- Never spill liquid of any kind on or into this product.
- Never push an object of any kind into this product through any openings or empty slots in the unit, as you may damage parts inside the unit.
- Do not attach the power supply cabling to building surfaces.
- Use only the supplied power supply unit (PSU). Do not use the PSU if it is damaged.
- Do not allow anything to rest on the power cabling or allow any weight to be placed upon it or any person walk on it.
- To protect the unit from overheating, do not block any vents or openings in the unit housing that provide ventilation and allow for sufficient space for air to circulate around the unit.

# CONTENTS

<b>1.INTRODUCTION.....</b>	<b>5</b>
<b>2.APPLICATIONS.....</b>	<b>5</b>
<b>3. PACKAGE CONTENTS.....</b>	<b>5</b>
<b>4. SYSTEM REQUIREMENTS.....</b>	<b>5</b>
<b>5. FEATURES.....</b>	<b>6</b>
<b>6.SPECIFICATIONS.....</b>	<b>6</b>
<b>7. OPERATION CONTROLS AND FUNCTIONS.....</b>	<b>7</b>
<b>7.1 Front Panel .....</b>	<b>7</b>
<b>7.2 Rear Panel.....</b>	<b>7</b>
<b>8. CONNECTION DIAGRAM.....</b>	<b>8</b>
<b>9. SYSTEM SETTING.....</b>	<b>9</b>
<b>9.1 Change the IP Address.....</b>	<b>9</b>
<b>9.2 Login of Configuration.....</b>	<b>10</b>
<b>9.3 Check the Status.....</b>	<b>10</b>
<b>9.4. Decoder Setting.....</b>	<b>11</b>
<b>9.4.1 Address Setting.....</b>	<b>11</b>
<b>9.4.2 Network Setting.....</b>	<b>12</b>
<b>9.4.3 Password Setting.....</b>	<b>12</b>
<b>9.4.4 Output Setting.....</b>	<b>13</b>

**10. OSD SETTING.....13**

**11. CROP SETTING.....14**

**12. SYSTEM UPDATE.....15**

**13. RESET TO FACTORY DEFAULTYS.....15**

## **1. INTRODUCTION**

This high performance H.265 /H.264 decoder support RTSP, HTTP TS, HTTP FLV, RTMP, UDP and HTTP PTE etc streaming protocol decoding, which is ideal for decoding multiple types of video streams and is also compatible with multi-brand video encoders, It supports switch up to 4 channels decoding.

With the computer control software, the decoder supports multi-viewer by decoding 4 video streams at the same time.

## **2. APPLICATIONS**

- Security surveillance and control
- Commercial advertising, display and control
- University lecture hall, display and control
- Retail sales and demonstration
- Decode Multi-brand Video Encoder

## **3. PACKAGE CONTENTS**

- 1). Main Unit. H.265 HD HDMI Decoder
- 2). 1x Power adapter DC 12V
- 3). Operating Instruction manual

## **4. SYSTEM REQUIREMENTS**

- HDMI source equipment such as media players, video game consoles or set-top boxes.
- H.265 /H.264 encoder with the same streaming protocol.
- HDMI receiving equipment such as HDTVs, monitors or audio amplifiers.
- The use of “Premium High Speed HDMI” cables is highly recommended

## 5. FEATURES

- Support RTSP/HTTP TS/HTTP FLV/RTMP/UDP Input and HTTP PTE decoding protocols.
- Support H.265/H.264 Video decoding.
- Support HDMI /VGA/CVBS/3.5mm L/R Audio output.
- Support max 4 channels of video stream decoding.
- Support output video resolution setting.
- Support Ethernet port transmission speed 1000mbit / s.
- HTTP WEB, support login and password settings.
- Support multi-viewer function (decoding channels 1-4).

## 6. SPECIFACATIONS

Enternet Input	1000mbit /s
Enternet Protocols	TS Protocols ,RTSP/HTTP TS/HTTP FLV/RTMP/UDP,Private HTTP PTE
Video Decoding	H.265 main profile H.264 baseline/main/high profile L4.2
Bit Rate ( kbps )	32-32000
Resolution	Max 3840*2160@30fps / 1080P@60fps
Video Decoding channel	Max 4 channels
Audio decoding types	G711A/G711U/AAC/AAC+/AAC++/AC3/MP2/MP3
Audio channel	Left and right stereo
Sampling rate	8000/11250/22500/44100/48000 Hz
VGA Output	1080P@60/1080I@60/1080P@50/1080I@50/1080P30/1080P25 /720P60/720P50/576P50/480P60
HDMI Output	2160P@30/1440P@30/1080P@60/1080I@60/1080P@50/1080I @50 1080P30/1080P25/720P60/720P50/576P50/480P60
CVBS	PAL 720*576 / NTSC 720*480
Dimensions(WxHxD)	L134.2 X W104.5 X H24mm
Net Weight	410g
Operating Temperature	32°F to 104°F (0°C to 40°C)
Storage Temperature	14°F to 140°F (-10°C to 60°C)
Power consumption	3W(Max)

## 7. OPERATION CONTROLS AND FUNCTIONS

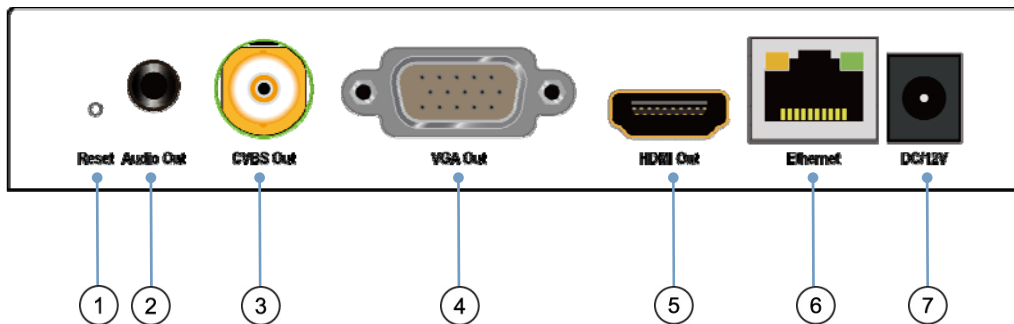
### 7.1 Front Panel



- ① Indicator of signal input
- ③ Indicator of power input

- ② Indicator of Lan input

### 7.2 Rear Panel

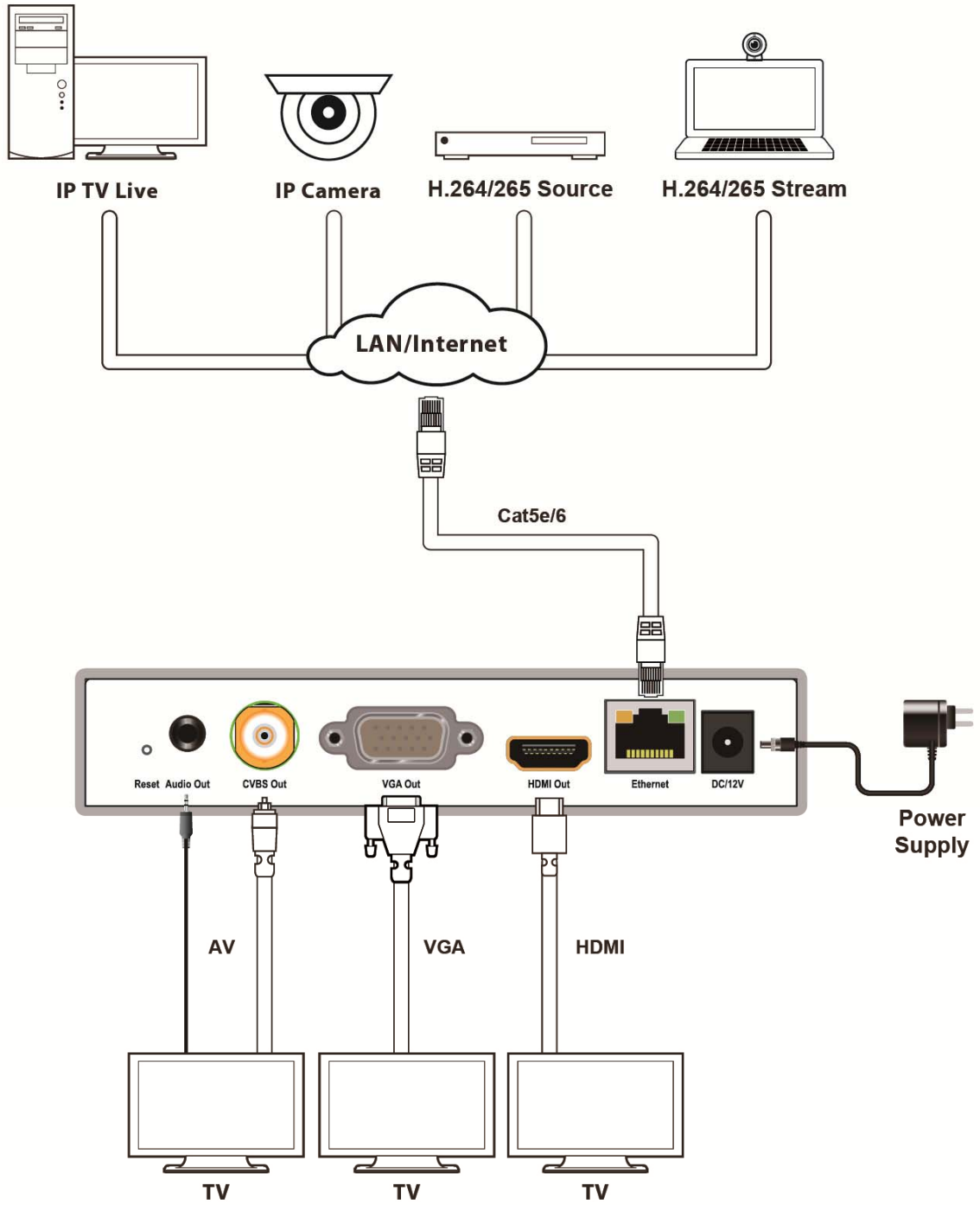


- ① Reset button **1**
- ③ CVBS Output
- ⑤ HDMI output
- ⑦ DC port

- ② Audio Output
- ④ VGA output
- ⑥ Ethernet port

Note: **1**. Reset to the factory default setting: press “Reset” for 10 seconds till all three indicators go out.

## 8. CONNECTION DIAGRAM

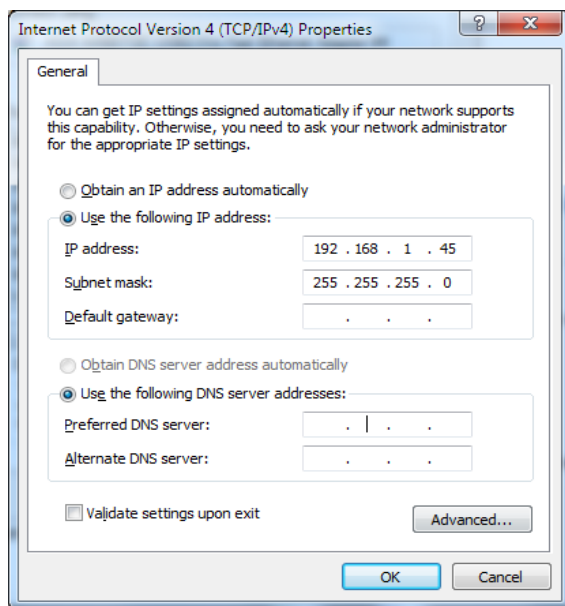
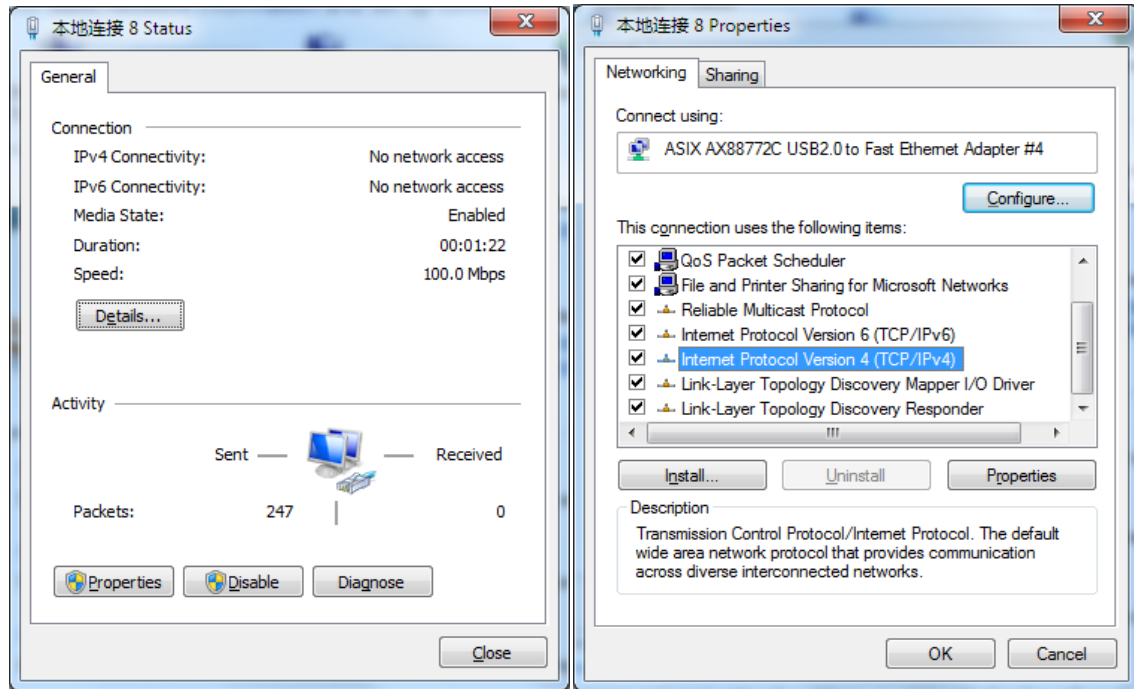




## 9.SYSTEM SETTING

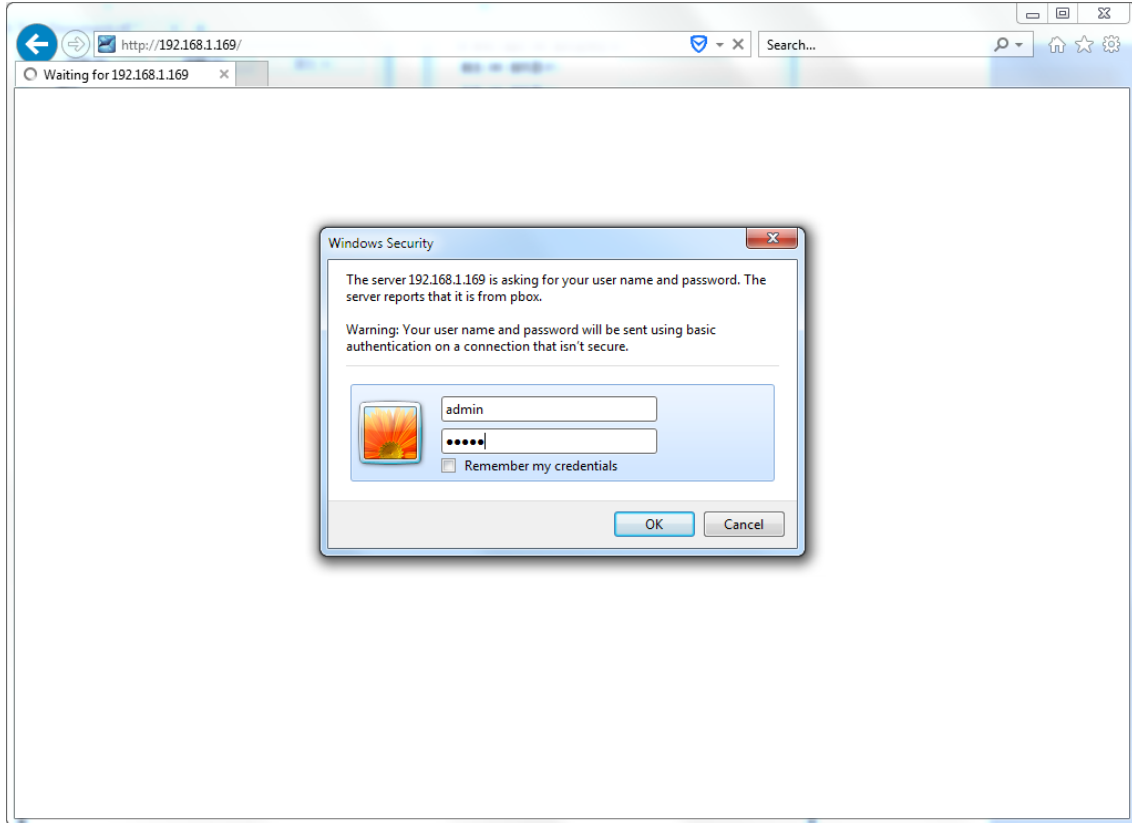
### 9.1 Change the IP Address of PC

Assign the PC (or laptop) IP address on the computer: “Control Panel”→ “Network Connections”→ “Local Area Connections Status”→ “Properties”→ “Internet Protocol (TCP/IP)”→Type the IP address with 192.168.1.XX (0-254) and Subnet mask with 255.255.255.0. After that press OK to save the configuration.



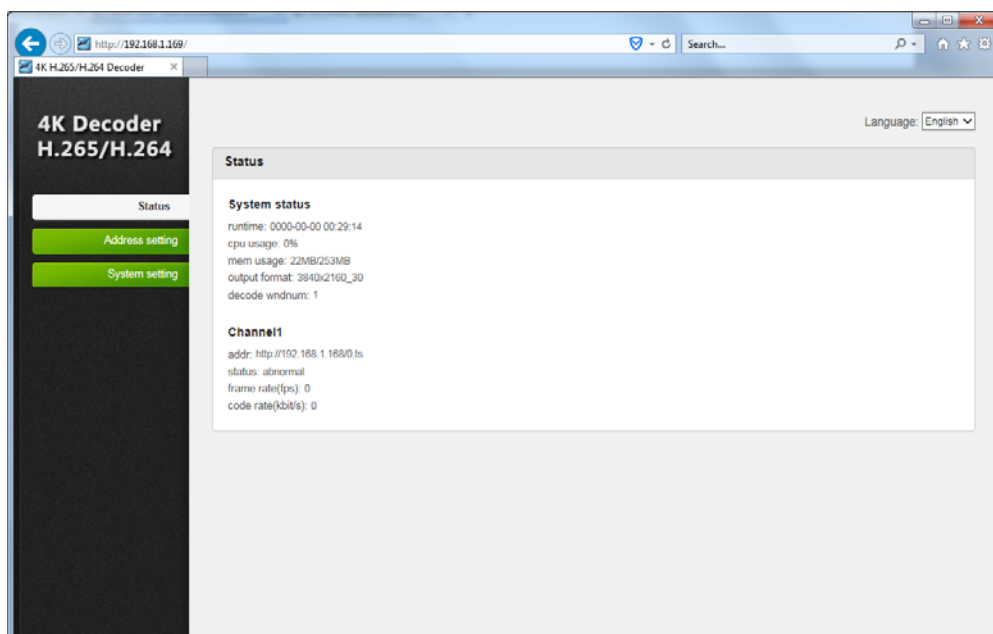
## 9.2 Login for configuration

Enter the unit IP 192.168.1.169 on browser, to open the web GUI. Login with default user name and pass word: admin. Like below, into the home page.



## 9.3 Check the Status

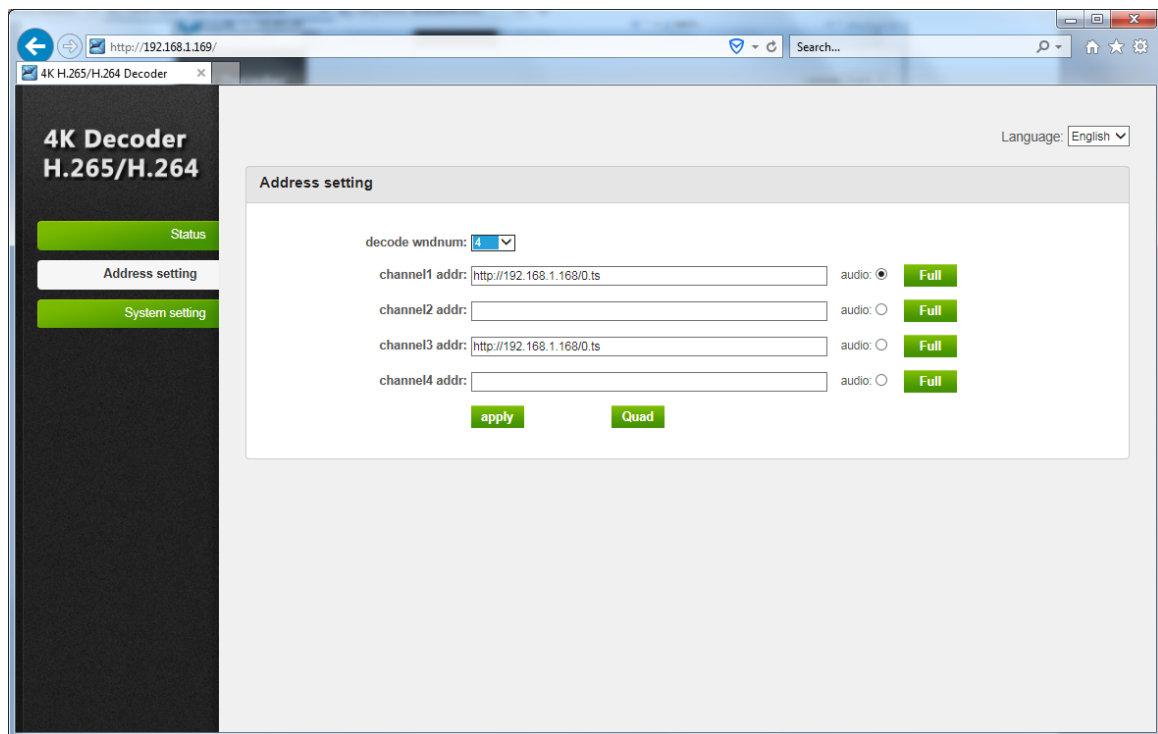
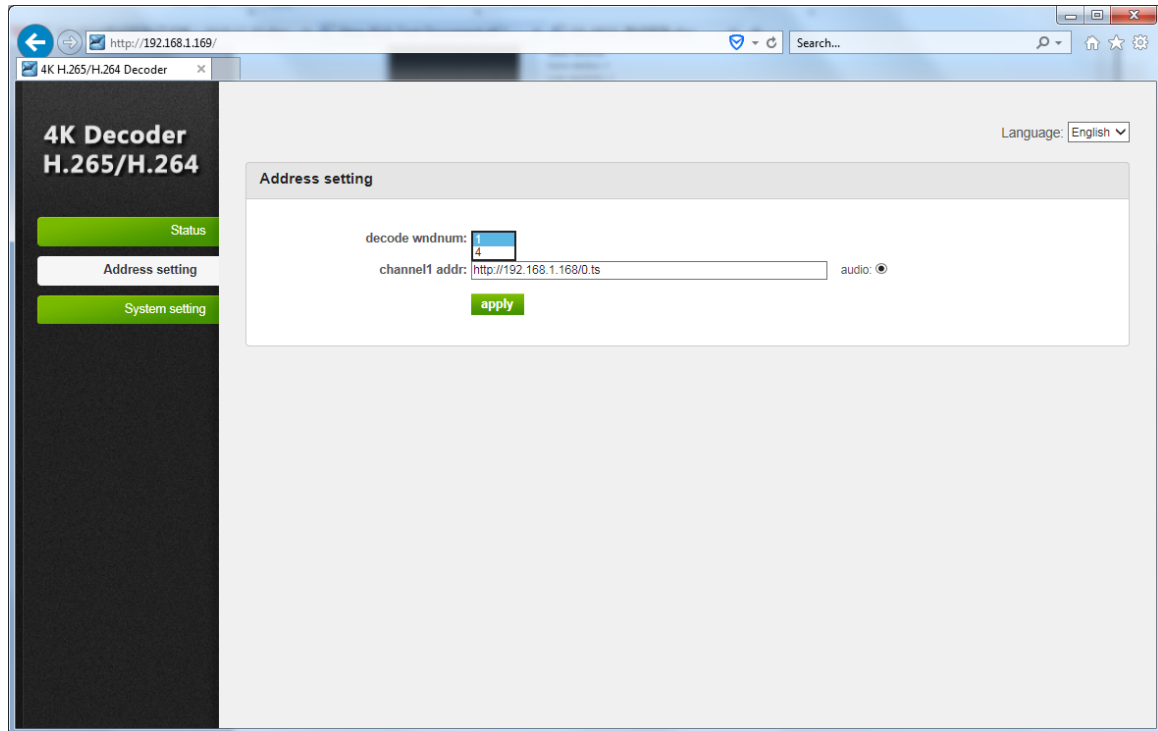
The status display column is divided into two modules: “System Status” and “Channel 1-4 Play Status”. The status information can be updated at real time.



## 9.4 Decoder Setting

### 9.4.1 Address Setting

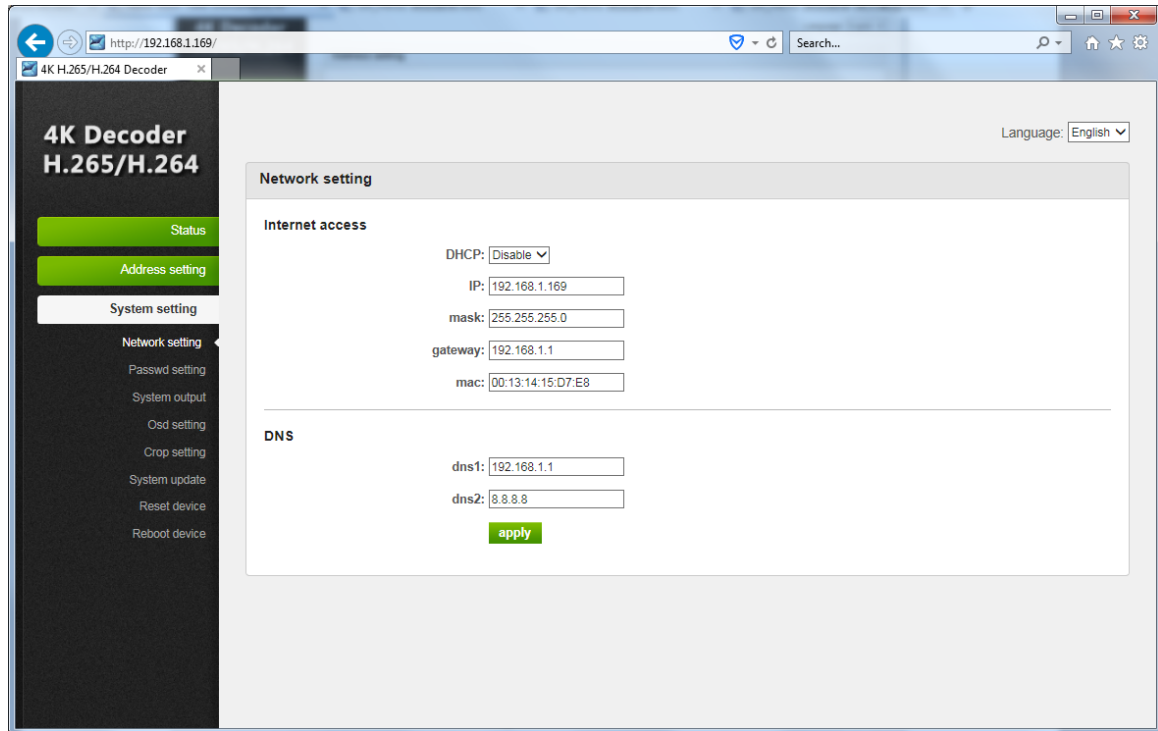
Click Address setting→Select decode wndnum from channel 1 to 4→Fill in stream address→Select Audio→Click Apply



### 9.4.2 Network setting

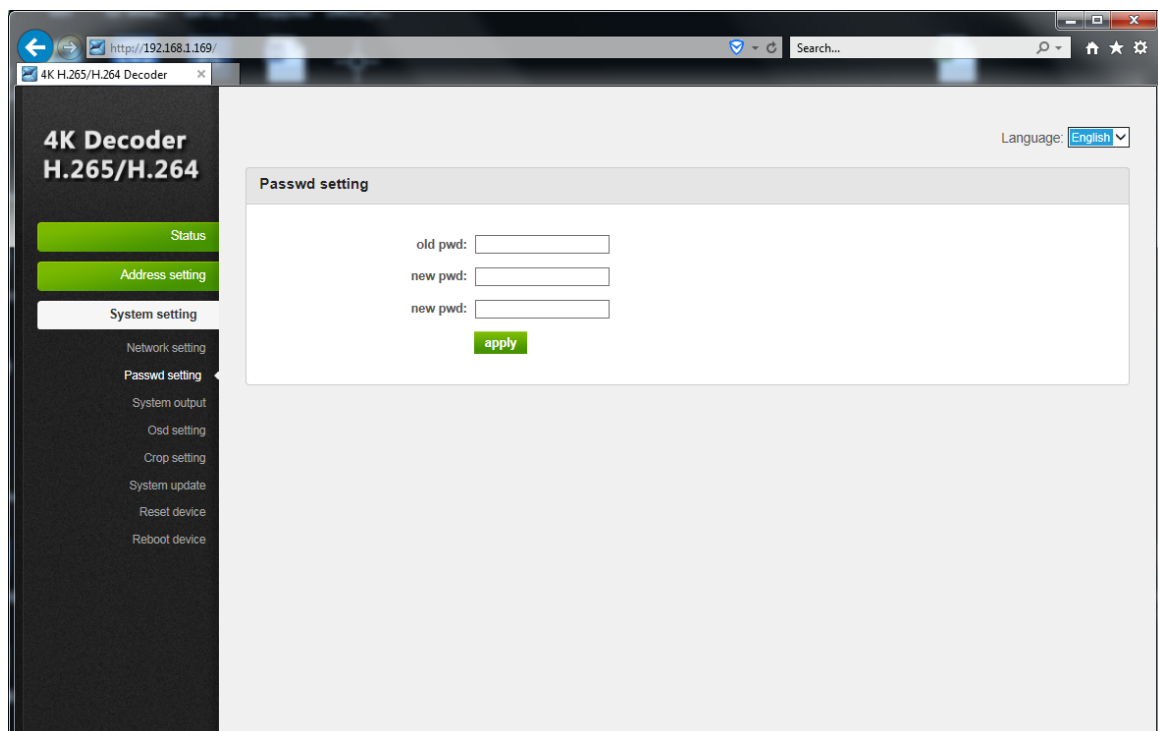
Click Network setting→Setting the parameters→Click apply

Default DHCP closed, IP address: 192.168.1.169, subnet mask: 255.255.255.0, default gateway: 192.168.1.1



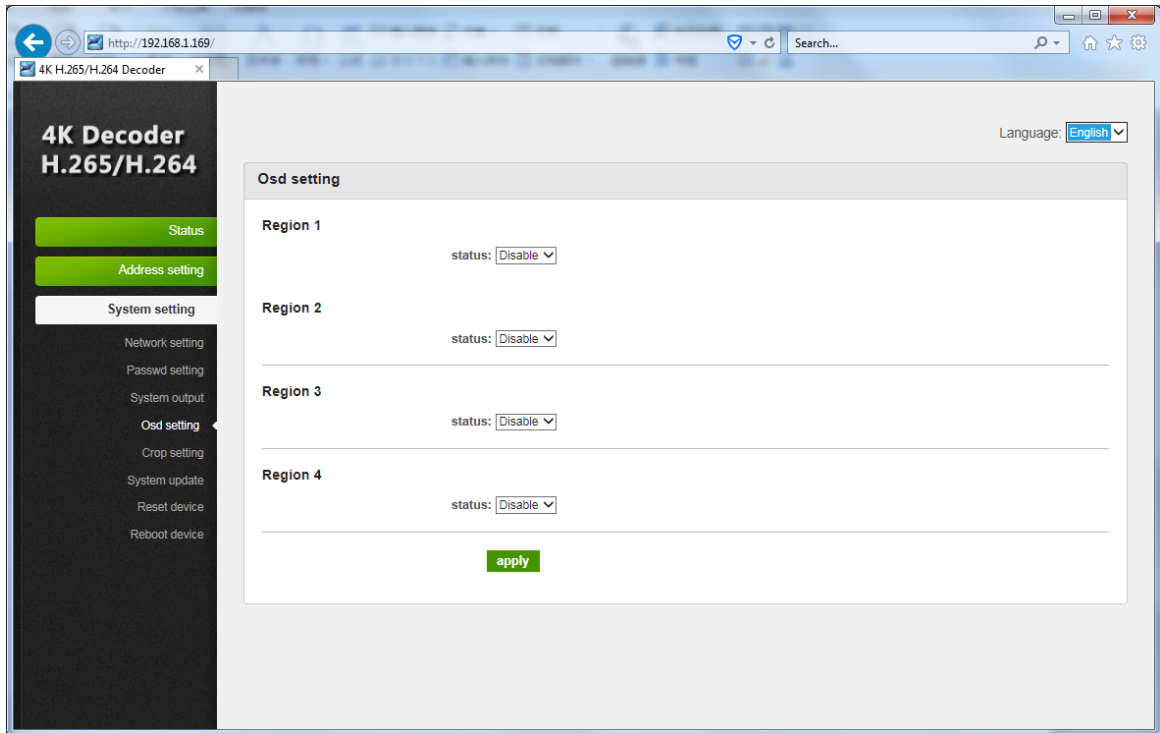
### 9.4.3 Password Setting

Click Password setting→Setting the parameters→Click apply



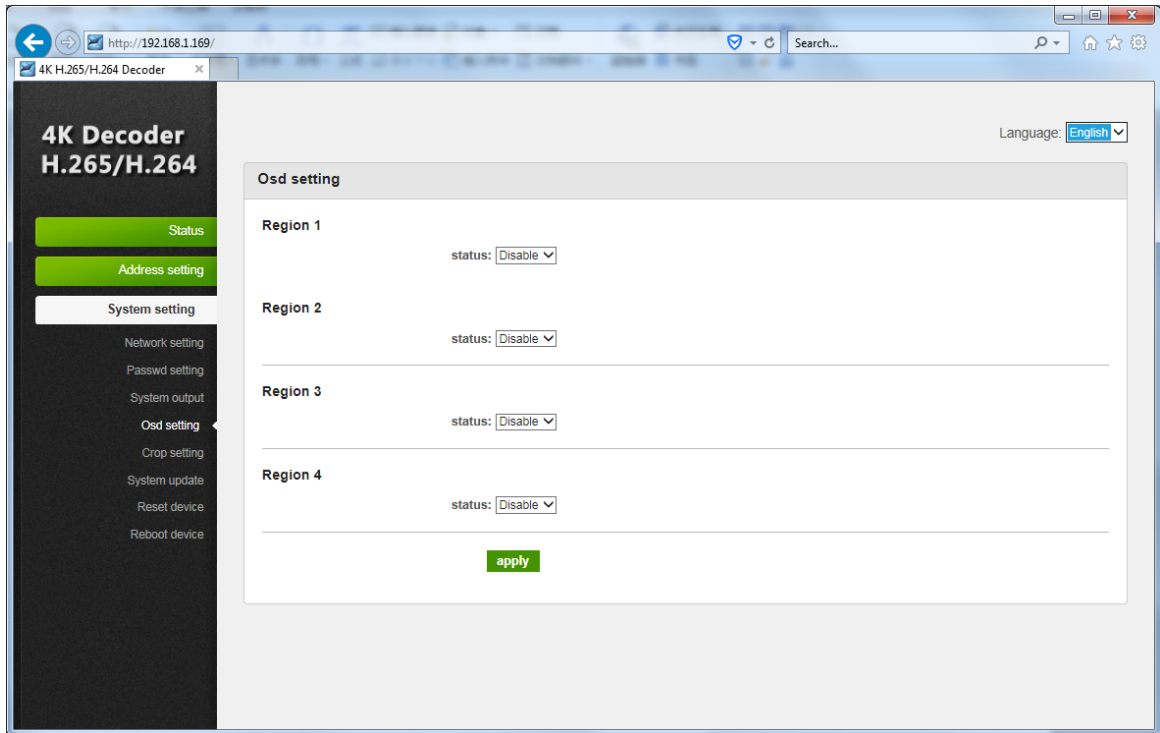
### 9.4.4 Output Setting

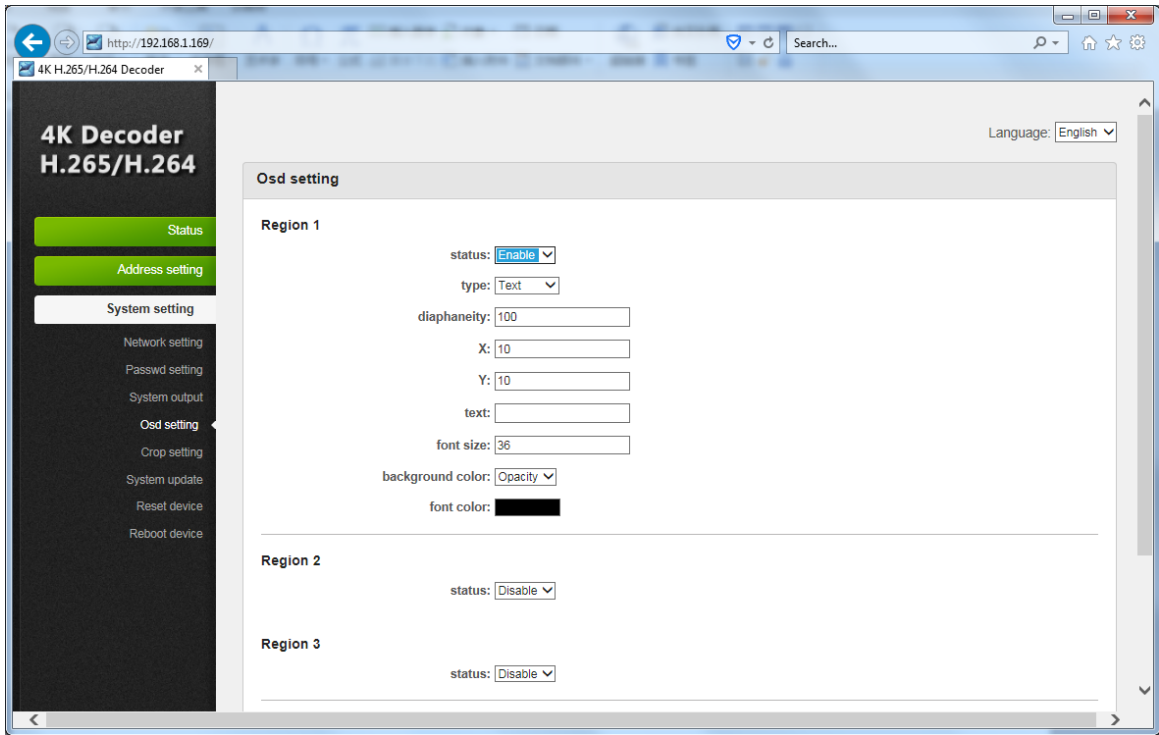
Click Output setting → Setting the parameters → Click apply



### 10. OSD Setting

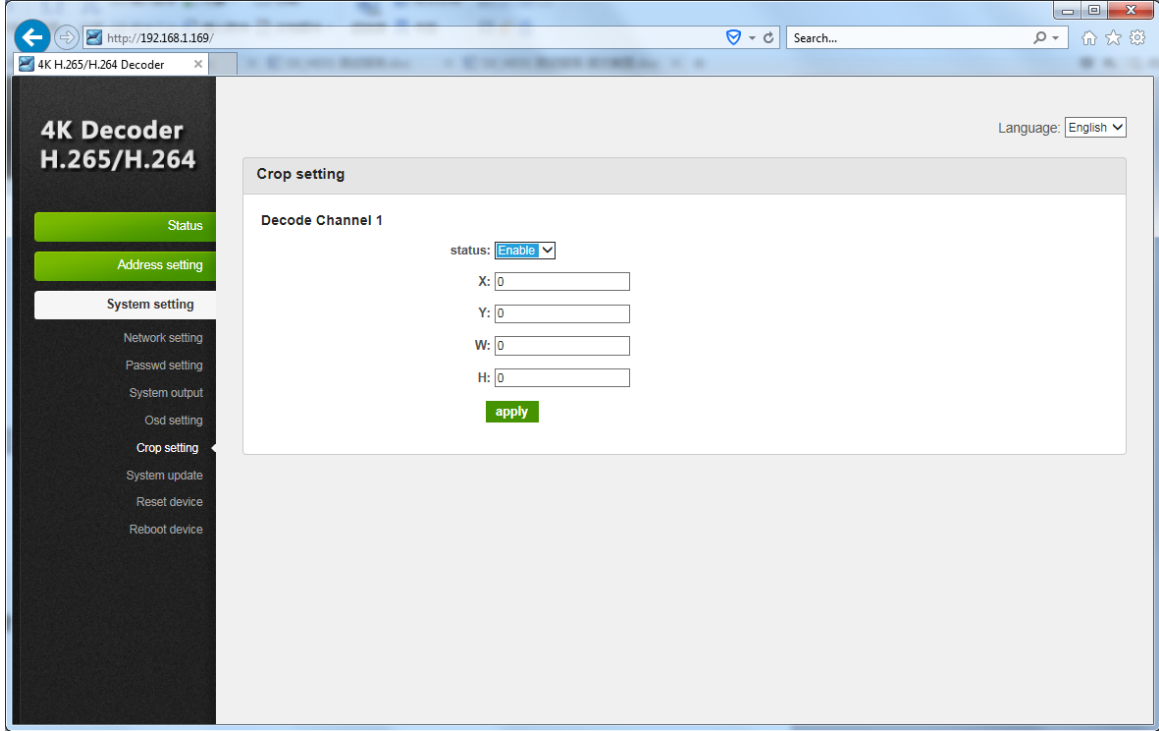
Click OSD setting → Slect status from region 1 to 4 → Setting the Parameters → Click apply





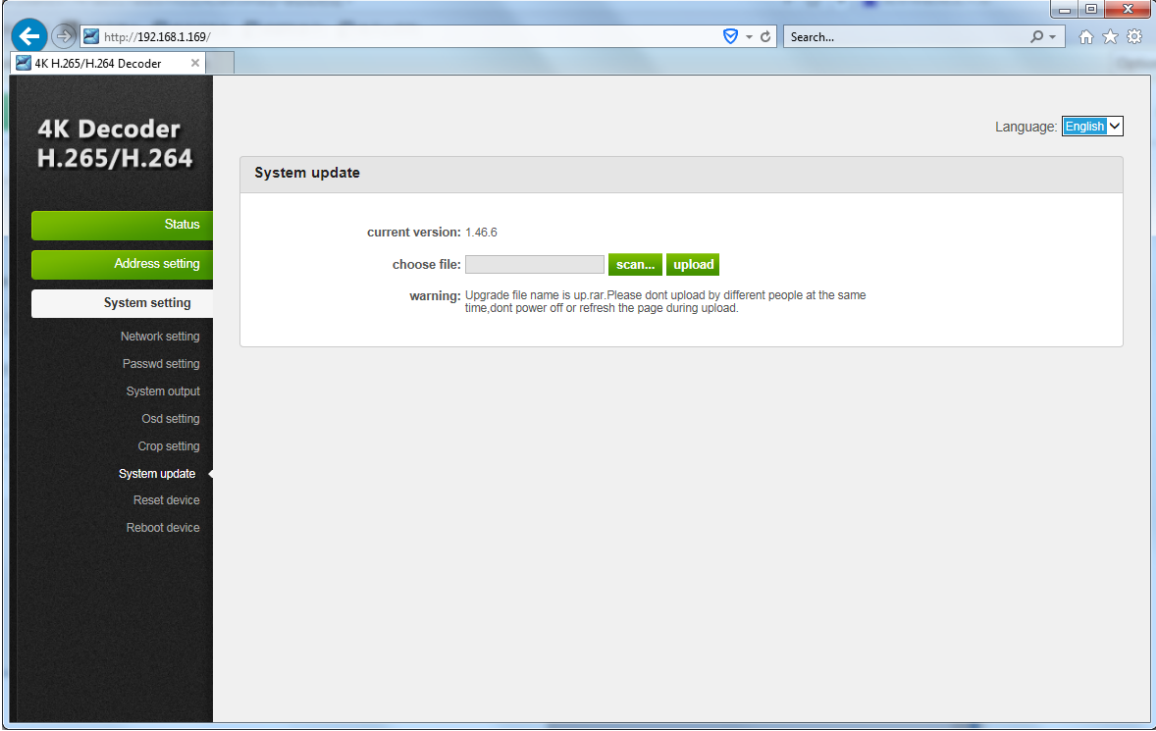
### 11.Crop Setting

Click Crop Setting→Enable the decode channel 1→Select coordinates value→Click Apply



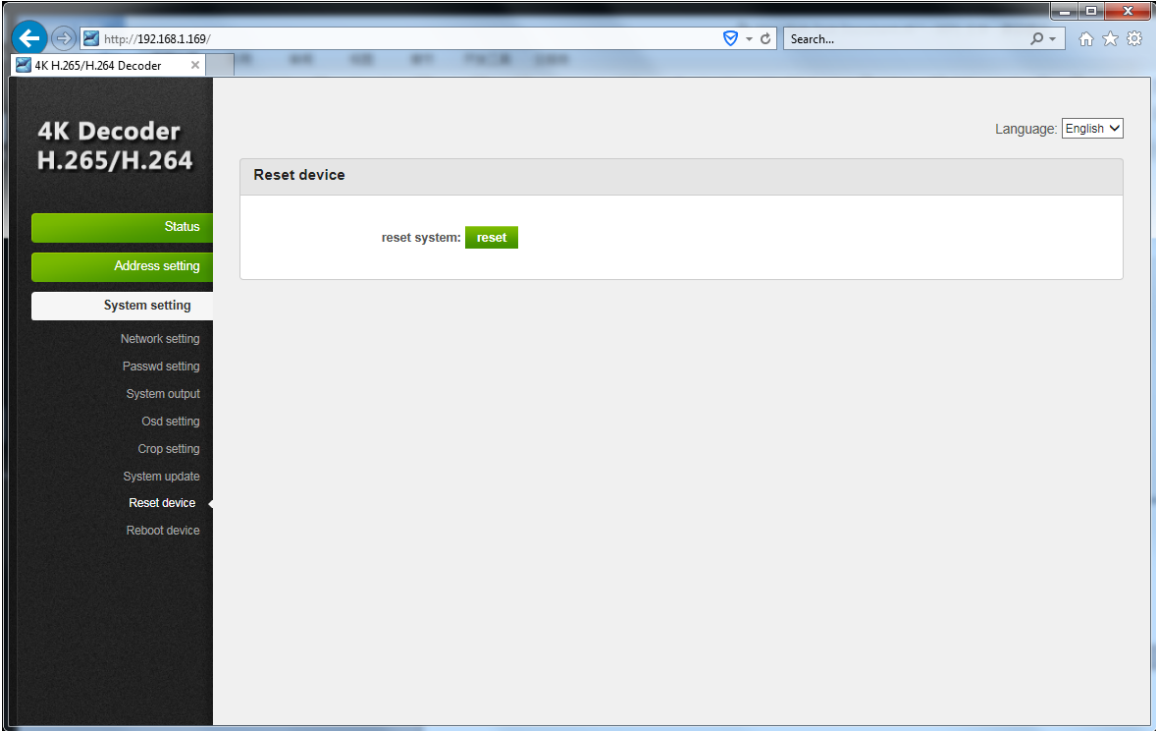
## 12. System Update

Click System update→Select Related files→Click apply.



## 13. Reset Factory Defaults

Click Reset Device→Click Reset→Click Apply





# CUSTOMER CARE CENTRE



- 1 THIS PRODUCT IS WARRANTED FOR 12 MONTHS FROM THE DATE OF PURCHASE.**  
Subject to the conditions of this warranty, the Customer Care Centre will perform necessary service on the product without charge for parts, or labour if, in the opinion of the manufacturer/ manufacturer's agent, the product is found to be faulty within the warranty period.
- 2** This warranty only applies if the product has been installed and used in accordance with the manufacturer's recommendations (as noted in the operating instructions) under normal use and reasonable care. The warranty covers normal domestic use only and does not cover damage, malfunction or failure resulting from use of incorrect voltage, accident, misuse, neglect, build-up of dirt or dust, abuse, mis-adjustment of customer controls, mains supply problems, thunderstorm activity, infestation by insects or vermin, tampering or repair by unauthorised persons (including unauthorised alterations), exposure to abnormally corrosive conditions or any foreign object or matter having entered the product.
- 3** If warranty service is required you should:
  - Telephone the Customer Care Centre on 1300 662 946
  - Provide a copy of your purchase receipt that shows retailer's identity and date of purchase.
  - Send or bring the product to your Customer Care Centre.  
Please note that freight to and/or from your Customer Care Centre must be arranged by you.
- 4** The warranties hereby conferred do not extend to any costs associated with the delivery, handling, freighting or transportation of the product or any part thereof or replacement of and do not extend to any damage or loss occurring during, or associated with transit.

**THIS WARRANTY CARD AND THE PURCHASE DOCKET  
(OR SIMILAR PROOF OF PURCHASE)  
SHOULD BE RETAINED BY THE CUSTOMER AT ALL TIMES**

**TROUBLE SHOOTING HELP LINE  
1300 662 946**

**Customer Care Centre  
562 Spencer Street, West Melbourne  
VICTORIA 3003**

**Pro.2**  
Providing AV Solutions

This advice does not limit, override or later your guaranteed rights under the Australian Consumer Law, including remedies for any failure of the Consumer Guarantees, which may include repair or replacement or it a Major Failure (as defined under the Australian Consumer Law) a replacement or refund. These guaranteed rights cannot be varied by Pro.2 or retailers of its products and have no set time limit.