

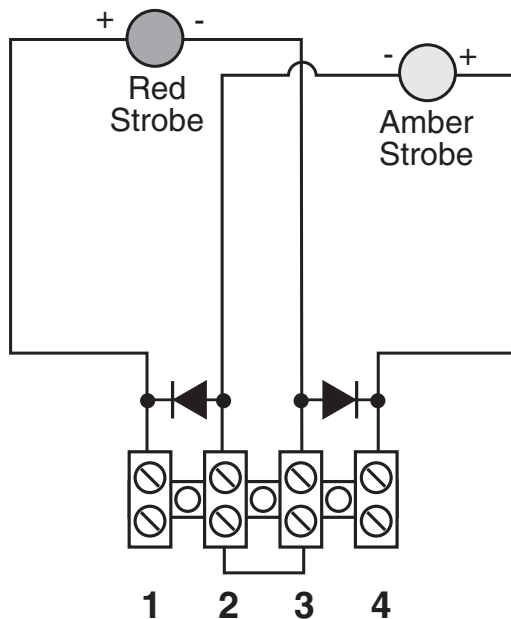
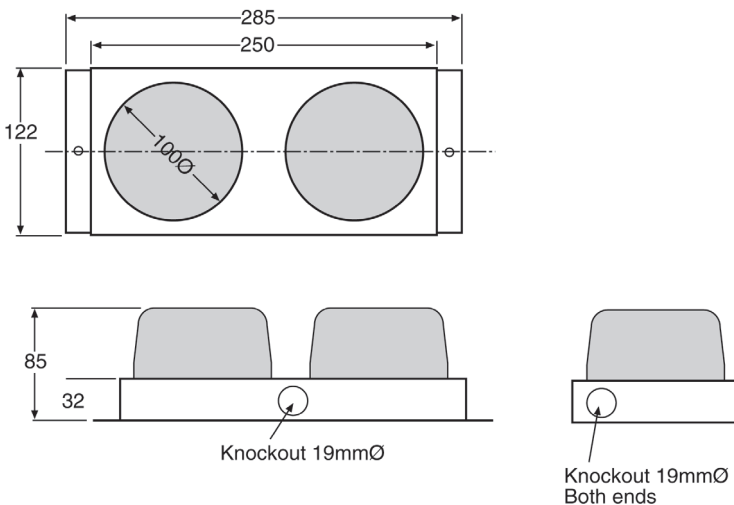
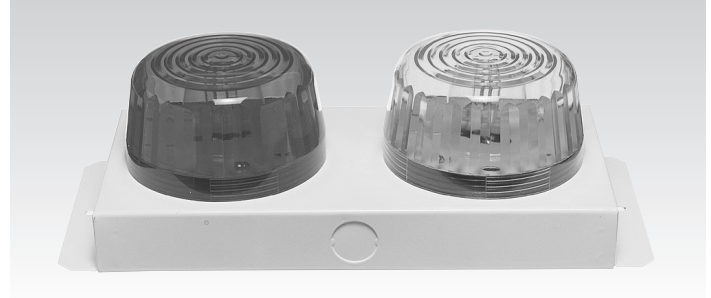
Installation Instructions

S 5423 Red/Amber Alert Strobes

Description

Dual strobe light for emergency evacuation systems

- Powered by 24V DC
- Dimensions 85H x 285L x 122W mm



S 5423 Schematic

- **Two Wire System:** remove link and connect pins 2 and 3
- **Three Wire System:** connect pins 1,2 and 3,4 with a link between pins 2 and 3
- **Four Wire System:** remove link and diodes then connect pins 1,2,3 and 4.

For a TWO WIRE system:

Selection of which strobe light is to be activated is determined by the polarity of the incoming DC power signal connected to pins 2 and 3 of the terminal block.

Important: Remove the link between these pins first

To connect the unit to activate the red strobe:

- Connect pin 2 to positive signal wire.
- Connect pin 3 to negative signal wire.

To connect unit to activate the amber strobe:

- Connect pin 2 to negative signal wire.
- Connect pin 3 to positive signal wire.

For a THREE WIRE system:

Important: Pins 2 and 3 must be joined with the link provided.

To connect unit to activate the red strobe:

- Connect pin 1 to positive signal wire
- Connect pin 2 and 3 (via link) to negative signal wire

To connect unit to activate the amber strobe:

- Connect pin 4 to positive signal wire
- Connect pin 2 and 3 (via link) to negative signal wire

For a FOUR WIRE system:

Important: Remove both diodes and link from the terminal block so that the strobes are powered by two separate pairs of wires.

To connect the unit to activate the red strobe:

- Connect pin 1 to positive signal wire.
- Connect pin 3 to negative signal wire.

To connect unit to activate the amber strobe:

- Connect pin 2 to negative signal wire.
- Connect pin 4 to positive signal wire.

Characteristics (at 24V DC)

Power supply (nominal):	24V DC
Power supply (allowable):	18 - 30V DC
Current consumption (at 24V DC):	200-300mA
Current consumption (at 12V DC):	100-150mA
Minimum flash rate (at 24V DC):	2.3Hz
Minimum flash rate (at 12V DC):	1.5Hz
Flash energy:	3.12 Joules / sec
Lens colour:	Red (Evac) & Amber (Alert)
Weight:	620g
Dimensions (overall):	85H x 285L x 122W mm
Conduit knockout diameter:	19mm