



THE BOOK 2018/2019



Hello Origin Acoustics Partner,

Thank you from the bottom of my heart for the support you have given Origin Acoustics. In just three short years we have become the fastest growing architectural loudspeaker manufacturer in the custom installation channel. It's because of you, who are passionate about offering your customers a better experience, that our speakers get installed in the finest residences in the world.

Every day we get up committed to produce the finest sounding and easiest to install products in the world. Enclosed in this book you will find the culmination of hundreds of collective years of innovation. This combined effort of the three founders of Origin, ensures that when you install one of our products, not only are you installing the best sounding product for today, we are guaranteeing it for a lifetime.

You see, we live this industry, just like you. We believe that every product you install delivers a life of musical enjoyment and fills a need, a need for great music that disappears elegantly into any environment. As we sit back and look at the industry, it's not passively, it's proactively.

Today content is readily available in ways we never imagined. For the price of an Echo Dot, you can create a multi-room music system that is totally voice controlled. Flush mount the Dot in the ceiling and with our new Valet™ amplifier you can connect the Dots in multiple rooms in the home and you will be able to deliver multiple music sources simply by asking for them to all to play through the finest speakers available.



Love your choices,

— Jeremy Burkhardt, CEO



CONNECT THE DOTS
HIDE THE DOTS
POWER THE DOTS



Introducing Valet Amplifiers™ Purpose Built for the Echo Dot



visit www.valetamplifiers.com

Table Of Contents

7 Wonders of Origin	4
Levels of Performance	6
Director Tool-less Installation	7
New Director Improvements	10
Director Collection	11
Weather X® Technology	20
Explorer Collection	22
Thinfit Collection	24
Producer Collection	28
Composer Tool-less Installation	32
Composer Sound Bars.....	34
Architectural Composer In-Wall Collection	36
Sub Collection	42
Deep™ Collection	44

Table Of Contents

Foundation Amplifier Collection.....	48
Valet™ Amplifiers.....	50
Landscape Amplifiers DSP3-700	52
Installation Accessories.....	54
Seasons Landscape Collection.....	58
Seasons Outdoor Collection	62
Grilles	67
Brackets, Sound Enclosures & Adapter Rings	70
Reconstruction Bracket.....	72
Product Overview.....	76
The Founders	78
Australia and New Zealand Contact Details.....	79
Design Notes and Planning Guide	80



1 Tri-Linear Configuration® (TLC)

Woofers, mids and tweeters all play their roles to perfection. Dividing the sonic spectrum and delivering powerful, three-way precision, the more advanced models in the Director Collection deliver remarkable impact and clarity.

2 Multi-Motion Pivot®

Focusing the critical mid and high frequencies directly at the listening position creates incredible sound stage and virtual depth in the performance.

3 X-Wave Surround®

This unique, inverted surround absorbs and dissipates unwanted resonances that run like ripples in a pond across the cone surface. This lowers distortion and refines all bass frequencies.

4 Compression Moulded Woofer Baskets

Using the most advanced materials and injection moulding techniques, these baskets out perform typical stamped or cast baskets in their rigidity and integrate with the driver's suspension to improve linear travel and low-frequency definition.

5 Variable Depth Absorption Layer® (VDAL)

Every nuance of the new Director collection has been carefully considered to provide maximum sonic performance. The interior of the baffle has been fitted with a Variable Depth Absorption Layer or VDAL®. This rubberised insert reduces resonances in the baffle structure while also eliminating mid and high frequency reflections that can negatively affect the pristine focus and clarity these speakers are capable of producing.

6 Dual Plane Stabilised Diaphragm™ (DPSD)

A patented innovation that dramatically enhances dispersion of the entire loudspeaker, the DPSD tweeter's dual suspension design improves linearity, even at high volume. It also substantially expands frequency response allowing for precise reproduction of every nuance of the music.

7 Tool-Less - Fast & Flexible

14 different models fit into the 6 and 8 inch bayonet ring allowing for incredible variety in price and performance levels. Decisions don't have to be made until the final installation. A ring and grille can hold the place for the speaker that then takes only seconds to install.



Power & Diversity

The Director Collection offers an unrivalled selection of sizes and performance levels to give you the ability to select the perfect speaker for every application.

Matching Sonic Signatures

Select one of five performance levels and be confident that every model will be timbre matched. Blend composer and Director model speakers into one cohesive system at each level.



Black Kevlar® Woofers
Silk DPSD Tweeters



Glass Fibre Woofers
Silk DPSD Tweeters



IMG Woofers
Silk DPSD Tweeters



IMG Woofers
Aluminium Tweeters



Poly/Rubber Woofers
Silk Tweeters

Size Matters

Origin Acoustics offers in-ceiling speakers with 3, 5, 6 ½, 8 and 10-inch woofers. We also produce four different size in-wall models with 10, 12, 15 and 30-inch baffles and multiple driver configurations. There is now literally the right size speaker for every situation.

LET IT ROAR !

The ability to fit larger woofers into smaller baffles is one of the defining properties of the Director Collection.

An 8-inch woofer in a typical 6-inch speaker footprint is a substantial improvement. A 10-inch woofer behind a typical 8-inch grille dramatically increases both bass output and extension when compared to traditional speakers. More bass in less space means a more pleasant aesthetic and an incredible advance in performance.

ORIGIN ACOUSTICS WOOFER

TYPICAL SPEAKER WOOFER



TYPICAL 6"
SPEAKER FOOTPRINT

ORIGIN ACOUSTICS WOOFER

TYPICAL SPEAKER WOOFER




TYPICAL 8"
SPEAKER FOOTPRINT

The Install Requires No Tools...

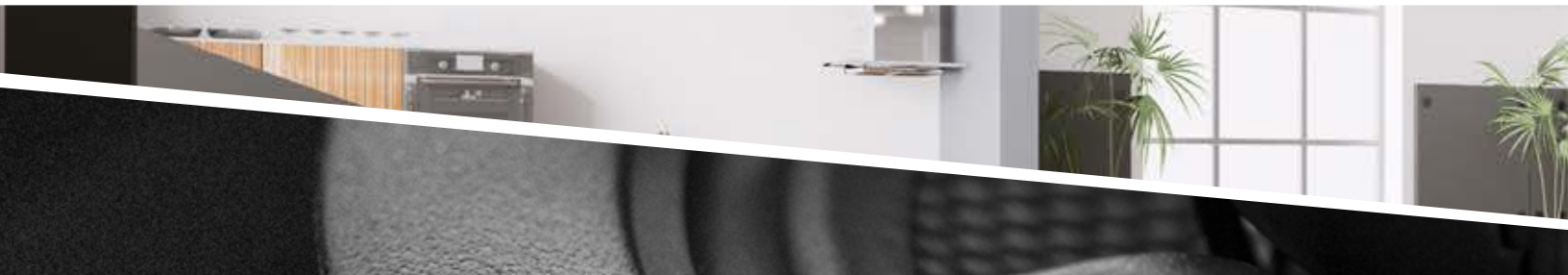
Our revolutionary design incorporates a mounting ring which fits into routed drywall and is then secured by four clips hand squeezed into place. This creates the optimum amount of torque to secure the speaker. The speaker is then inserted into the mounting ring and twisted clockwise to lock it in place.

The revolutionary Tool-Less Installation system spreads the weight of the speaker over a larger area than typical mounting systems. Spring-loaded clips also create more uniform pressure against the drywall, eliminating any warping or distortion of the speaker baffle as well as eliminating any stress or cracking of the drywall.



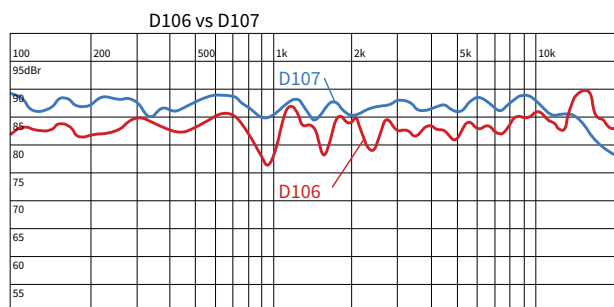


“There is only one thing stronger than all the armies of the world: and that is an idea whose time has come.”
- Victor Hugo



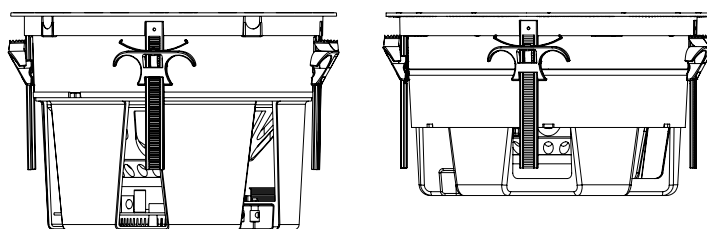
Improved Sensitivity

Through impedance and crossover refinements we have improved output sensitivity by an average of 3dB. This dramatically decreases power requirements in large multi-room systems. Impedance is nominal 6 ohms vs 8 ohms in previous models.



Reduction in Depth

The best loudspeaker in the world is useless if it cannot fit into the ceiling construction. The new Director, 3-way models have shaved as much as 4.5cm off of the depth of their previous counterparts.



Old

New

10" 3-way	19cm	16cm
8" 3-way	19cm	14cm



Ultra-Pivot® Mids & Tweeters

A smoother and more secure mechanism, the Ultra-Pivot® allows for precise directional focus of critical mid and high frequencies.



Magnetic Discretion

The grille magnets are enclosed in the Tool-Less Installation mounting ring, sealing them away from exposure to moisture and temperature extremes. Rubber material used on the baffle reduces unwanted reflections.



Advanced Industrial Design

We've achieved total "blackout" through the use of black aluminium and black Kevlar® components.

D100 Collection

When real dynamic bass from the ceiling is the demand, the Director 100 Collection is the obvious answer. A massive 10" woofer backs up the incredible Multi-motion Pivoting assembly in our Tri-Linear®, three-way configuration assuring the sound ends up exactly where it needs to be. In addition, this 10" speaker astoundingly fits into a footprint the size of a conventional 8" Speaker. The Director 100 is sure to impress. We are certain these are the finest in-ceiling speakers ever made.



Model: D109

Part: SCD100900

- Woofer: 10" Kevlar®
- Mid-Range: 4" Kevlar® Multi-motion Pivoting
- Tweeter: ¾" Silk DPSD Multi-motion Pivoting
- Frequency Response: 25Hz-20kHz

- Power Handling: 50-250 Watts
- Diameter: 286mm
- Grille Diameter: 296mm
- Cutout Diameter: 264mm
- Mounting Depth: 158mm



Bracket:
BR10



Enclosure:
FB10



Weather-X™:
BZ10WX



Model: D107

Part: SCD100700

- Woofer: 10" Glass Fibre
- Mid-Range: 4" Glass Fibre Multi-motion Pivoting
- Tweeter: ¾" Silk DPSD Multi-motion Pivoting
- Frequency Response: 28Hz-20kHz

- Power Handling: 50-200 Watts
- Diameter: 286mm
- Grille Diameter: 296mm
- Cutout Diameter: 264mm
- Mounting Depth: 158mm



Bracket:
BR10



Enclosure:
FB10



Weather-X™:
BZ10WX



Model: D105

Part: SCD100500

- Woofer: 10" IMG
- Mid-Range: 4" IMG Multi-motion Pivoting
- Tweeter: ¾" Silk DPSD Multi-motion Pivoting
- Frequency Response: 28Hz-20kHz

- Power Handling: 50-175 Watts
- Diameter: 286mm
- Grille Diameter: 296mm
- Cutout Diameter: 264mm
- Mounting Depth: 158mm



Bracket:
BR10



Enclosure:
FB10



Weather-X™:
BZ10WX



D80 Collection

Better bass response and greater output level in the Director 80 Collection is obvious the moment it goes active. Its most amazing feature is fitting all of this performance into a flush mount package the size of a standard 6" ceiling speaker. The Director 80 collection is available in five performance levels and sets a new sonic standard for speakers in this diameter.



Model: D89
Part: SDC80900

- Woofer: 8" Kevlar®
- Mid-Range: 4" Kevlar® Multi-motion Pivoting
- Tweeter: ¾" Silk DPSD Multi-motion Pivoting
- Frequency Response: 30Hz-20kHz

- Power Handling: 50-200 Watts
- Diameter: 244mm
- Grille Diameter: 254mm
- Cutout Diameter: 222mm
- Mounting Depth: 142mm



Bracket:
BR68
REBR68



Enclosure:
FBD82X8



Weather-X™:
BZ68WX



Model: D87
Part: SCD80700

- Woofer: 8" Glass Fibre
- Mid-Range: 4" Glass Fibre Multi-motion Pivoting
- Tweeter: ¾" Silk DPSD Multi-motion Pivoting
- Frequency Response: 34Hz-20kHz

- Power Handling: 50-175 Watts
- Diameter: 244mm
- Grille Diameter: 254mm
- Cutout Diameter: 222mm
- Mounting Depth: 142mm



Bracket:
BR68
REBR68



Enclosure:
FBD82X8



Weather-X™:
BZ68WX



Model: D85
Part: SCD80500

- Woofer: 8" IMG
- Mid-Range: 4" IMG Multi-motion Pivoting
- Tweeter: ¾" Silk DPSD Multi-motion Pivoting
- Frequency Response: 36Hz-20kHz

- Power Handling: 50-150Watts
- Diameter: 244mm
- Grille Diameter: 254mm
- Cutout Diameter: 222mm
- Mounting Depth: 142mm



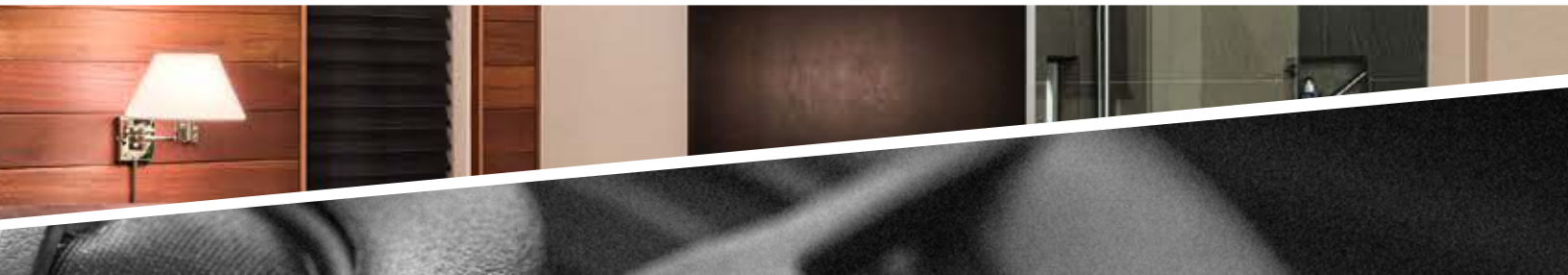
Bracket:
BR68
REBR68



Enclosure:
FBD82X8



Weather-X™:
BZ68WX



Model D83

Part: SDC80300

- Woofer: 8" IMG
- Tweeter: 1" Aluminium
- Frequency Response: 38Hz-20kHz
- Power Handling: 50-125 Watts

- Diameter: 244mm
- Grille Diameter: 254mm
- Cutout Diameter: 222mm
- Mounting Depth: 105mm



Bracket:
BR68
REBR68



Enclosure:
FBD82X8
FBD82X6



Weather-X™:
BZ68WX



Model: D83A

Part: SCD8030A

- Woofer: 8" IMG - Fixed Angle
- Tweeter: 1" Aluminium
- Frequency Response: 38Hz-20kHz
- Power Handling: 50-125 Watts

- Diameter: 244mm
- Grille Diameter: 254mm
- Cutout Diameter: 222mm
- Mounting Depth: 105mm



Bracket:
BR68
REBR68



Enclosure:
FBD82X8
FBD82X6



Weather-X™:
BZ68WX



Model: D81-6

Part: SCD80100

- Woofer: 8" Poly/Rubber
- Tweeter: 1" Silk
- Frequency Response: 38Hz-20kHz
- Power Handling: 50-125 Watts

- Diameter: 244mm
- Grille Diameter: 254mm
- Cutout Diameter: 222mm
- Mounting Depth: 105mm



Bracket:
BR68
REBR68



Enclosure:
FBD82X8
FBD82X6



Weather-X™:
BZ68WX



D60 Collection

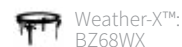
The Director 60 Collection is both powerful and discreet. Its two-way design in five performance levels offers a solution for systems that demand sonic purity in smaller spaces. Sharing technologies with its larger siblings, the 60 Collection will surprise listeners with its detail and impact.



Model: D69

Part: SCD60900

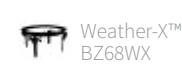
- Woofer: 6 ½" Kevlar® Pivoting
- Tweeter: 1" Silk DPSD Multi-motion Pivoting
- Frequency Response: 40Hz-20kHz
- Power Handling: 25-160 Watts
- Diameter: 244mm
- Grille Diameter: 254mm
- Cutout Diameter: 222mm
- Mounting Depth: 116mm



Model: D67

Part: SCD60700

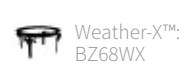
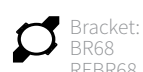
- Woofer: 6 ½" Glass Fibre Pivoting
- Tweeter: 1" Silk DPSD Multi-motion Pivoting
- Frequency Response: 43Hz-20kHz
- Power Handling: 25-150 Watts
- Diameter: 244mm
- Grille Diameter: 254mm
- Cutout Diameter: 222mm
- Mounting Depth: 116mm



Model: D65

Part: SCD60500

- Woofer: 6 ½" IMG Pivoting
- Tweeter: 1" Silk DPSD Multi-motion Pivoting
- Frequency Response: 45Hz-20kHz
- Power Handling: 25-140 Watts
- Diameter: 244mm
- Grille Diameter: 254mm
- Cutout Diameter: 222mm
- Mounting Depth: 116mm





Model: D63

Part: SCD60300

- Woofer: 6 1/2" IMG
- Tweeter: 1" Aluminium Multi-motion Pivoting
- Frequency Response: 48Hz-20kHz
- Power Handling: 25-125 Watts

- Diameter: 244mm
- Grille Diameter: 254mm
- Cutout Diameter: 222mm
- Mounting Depth: 94mm

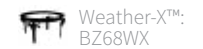


Model: D61-6

Part: SCD60100

- Woofer: 6 1/2" Poly/Rubber
- Tweeter: 1" Silk Pivoting
- Frequency Response: 48Hz-20kHz
- Power Handling: 25-125 Watts

- Diameter: 244mm
- Grille Diameter: 254mm
- Cutout Diameter: 222mm
- Mounting Depth: 88mm





D80 & D60 DUAL TWEETER COLLECTION



Model: D83DT/SUR

Part: SCD2T80300

- Woofer: 8" IMG
- Tweeter: Dual 1" Aluminium
- Frequency Response: 38Hz-20kHz
- Power Handling: 50-125 Watts

- Diameter: 244mm
- Grille Diameter: 254mm
- Cutout Diameter: 222mm
- Mounting Depth: 109mm



Surround or Stereo



Model: D63DT/SUR

Part: SCD2T60300

- Woofer: 6.5" IMG
- Tweeter: Dual 1" Aluminium
- Frequency Response: 48Hz-20kHz
- Power Handling: 25-125 Watts

- Diameter: 244mm
- Grille Diameter: 254mm
- Cutout Diameter: 222mm
- Mounting Depth: 94mm



Surround or Stereo



Model: D61DT

Part: SCD2T60100

- Woofer: 6.5" Poly/Rubber
- Tweeter: Dual 1" Silk
- Frequency Response: 48Hz-20kHz
- Power Handling: 25-125 Watts

- Diameter: 244mm
- Grille Diameter: 254mm
- Cutout Diameter: 222mm
- Mounting Depth: 88mm



Surround Sound

With a flip of a switch the D83DT and D63DT convert from a "single-stereo" speaker to a dedicated surround sound speaker. Using a single channel input, the tweeters are now 180° out of phase creating a diffused sound field that is perfect for rear and side effect channels.



D50 & DSUB6F5 COLLECTION

The biggest small speakers yet, the Director 50 Collection has been engineered to boast full frequency sound coverage with the least possible visual impact. With a finished footprint of only 7-inches, the speakers line up perfectly with the most popular size of recessed home lighting. The Director 50 Series yields performance with premium hand-selected materials without tampering with interior design.



Model: D59
Part: SCD50900

- Woofer: 5 ¼" Kevlar®
- Tweeter: 1" Silk DPSD Multi-motion Pivoting
- Frequency Response: 68Hz-20kHz
- Power Handling: 25-125 Watts
- Diameter: 172mm
- Grille Diameter: 183mm
- Cutout Diameter: 149mm
- Mounting Depth: 94mm



Bracket:
BR68
BR5



Model: D57
Part: SCD50700

- Woofer: 5 ¼" Glass Fibre
- Tweeter: 1" Silk DPSD Multi-motion Pivoting
- Frequency Response: 69Hz-20kHz
- Power Handling: 25-125 Watts
- Diameter: 172mm
- Grille Diameter: 183mm
- Cutout Diameter: 149mm
- Mounting Depth: 94mm



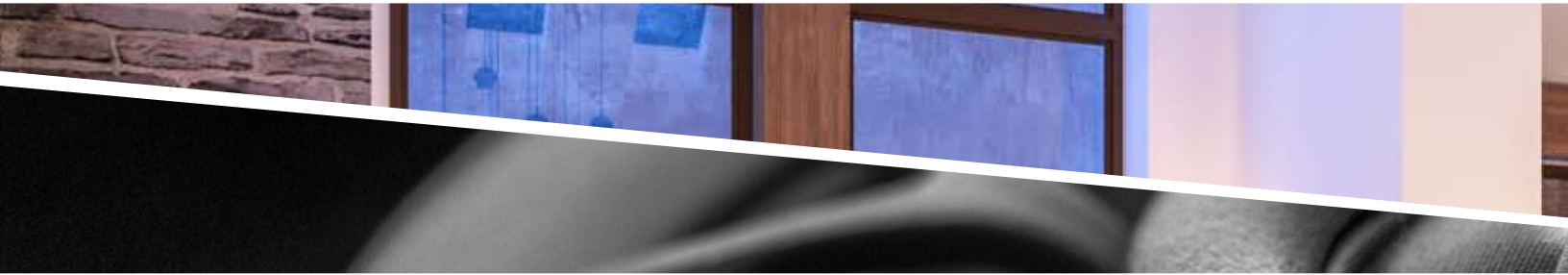
Bracket:
BR68
BR5



Model: DSUB6F5
Part: DSUBF500

- Woofer: Dual 6 ½" Poly
- Frequency Response: 33Hz-200Hz
- Power Handling: 100-250 Watts
- Dimensions: 201mm x 284mm x 480mm
- Grille Diameter: 183mm
- Cutout Diameter: 149mm
- Mounting Depth: 203mm

Amplifier:
SUBA150



Don't Forget The Sub

In order to design speakers to match the size of small ceiling lights, the size of the drivers becomes extremely limited. Here, a subwoofer is absolutely critical to provide appropriate sound quality. The Subwoofer may be in ceiling or a traditional floor standing sub.



Minimal Opening Collection

Creating incredible sound from miniature drivers is no small feat. The Minimal Opening Collection packs an impressive punch with a finished footprint of each speaker just over 10cm wide. This complements the aesthetics and 10cm downlights being installed in modern homes today.



Model: D39
Part: SCD30800

- Woofer: 3" Kevlar®
- Tweeter: 3/4" Silk DPSD Pivoting
- Frequency Response: 100Hz-20kHz
- Power Handling: 5-100 Watts

- Diameter : 100mm
- Grille Diameter: 110mm
- Cutout Diameter: 79.3mm
- Mounting Depth: 100mm

* Both round and square grilles Included



Model: DSUB6F3
Part: SDSUB6F300

- Woofer: Dual 6 1/2" Poly
- Frequency Response: 33Hz-200Hz
- Power Handling: 100-250 Watts

- Dimensions: 201 x 284 x 480mm
- Grille Diameter: 100mm
- Cutout Diameter: 89mm
- Mounting Depth: 203mm

* Both round and square grilles Included



Round or Square

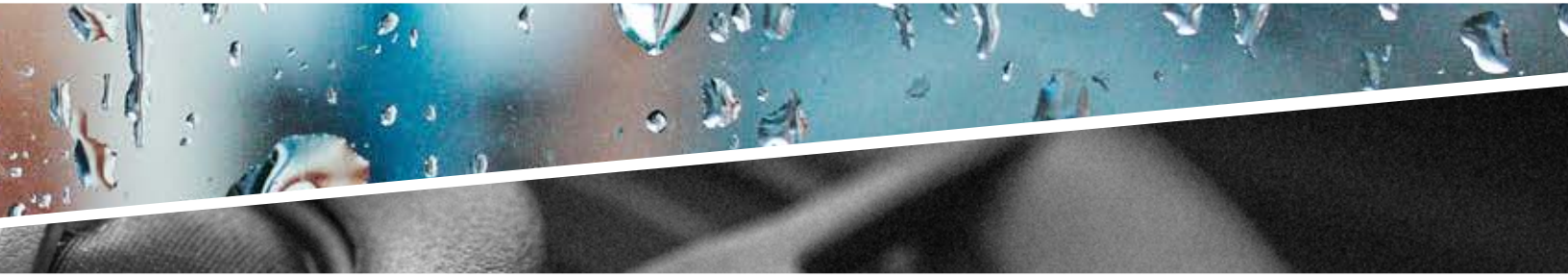
Even with our smallest loudspeakers we offer two geometric options for the grilles. Depending on the specific application and the individual design requirements, you can choose a round or square grille to define the finished look.



Every Origin Speaker is
IPX6 Rated.

IPX6 Rated + Weather-X™

All Origin speakers are IPX rated, meaning they will operate under extreme weather conditions. To the point where a direct blast from a hose is unlikely to stop the music. However, rust and corrosion have been a nemesis for any speaker exposed to the elements for as long as dealers have been installing them outside the house. Thus the revolutionary introduction of Weather-X™



Turn Back the Storm

Outdoor systems are becoming a major part of the residential offering from many of the highest profile dealers in the country.

Aside from the dedicated Seasons Landscape and On-wall models that are developed for this purpose. All Director and Composer speakers have been designed and built for this purpose as well.



Weather-X™ Technology
offers Guaranteed Rust
and Corrosion Protection

A Protective Shield

Now, a new coating process will guarantee the speakers will remain as attractive as they sound for ten years. That's right, the new Weather-X™ kits, which include a pre-coated mounting ring and accompanying grille will extend the aesthetic life of the speaker to match its electro-mechanical components.

Confidence and Peace of Mind

Take advantage of this new process and you can confidently spec any of the speakers from the Director and Composer collection on decks and patios, even on the seashore or lakeside. Rain, snow and sleet will be repelled and leave the speaker looking like it should for years to come.

EXPLORER

COLLECTION

LUXURY SOUND ON WATER OR LAND BY ORIGIN ACOUSTICS.



Travel the seven seas with the new Explorer Collection!

The Explorer Collection of loudspeakers from Origin Acoustics were developed to withstand the harsh conditions found in marine environments. This includes exposure to saltwater, extreme temperature changes and airborne humidity. They will produce amazing musical fidelity while spending family time on the lake or a trip on the open sea and they have the build quality to last for years in these situations.

Utilising a unique weather proof coating, careful attention has been taken to protect every component in the speaker system from the electro-mechanical driver elements to the crossover networks. Stainless steel fasteners and connectors have been selected to enhance wire connections and overall system durability. Now you can experience the incredible sound quality we are known for while enjoying your time on the water.

Find out more at www.originacoustics.com

D65EX

- Woofer: 6 ½" IMG Pivoting
- Tweeter: 1" Silk DPSD Multi-motion Pivoting
- Frequency Response: 45Hz-20kHz
- Power Handling: 25-140 Watts

- Diameter: 244mm
- Grille Diameter: 254mm
- Cutout Diameter: 222mm
- Mounting Depth: 116mm

C65EX

- Woofer: 4 x 8" IMG
- Tweeter: 1" Silk DPSD™ Pivoting
- Frequency Response: 45Hz-20kHz
- Power Handling: 25-110 Watts

- Dimensions: 140 x 300mm
- Grille Dimensions: 149 x 311mm
- Cutout Dimensions: 118 x 278mm
- Mounting Depth: 95mm

D83EX

- Woofer: 8" IMG
- Tweeter: 1" Aluminium
- Frequency Response: 38Hz-20kHz
- Power Handling: 50-125 Watts

- Diameter: 244mm
- Grille Diameter: 254mm
- Cutout Diameter: 222mm
- Mounting Depth: 105mm

D83DT/SUR EX

- Woofer: 8" IMG
- Tweeter: Dual 1" Aluminium
- Frequency Response: 38Hz-20kHz
- Power Handling: 50-125 Watts

- Diameter: 244mm
- Grille Diameter: 254mm
- Cutout Diameter: 222mm
- Mounting Depth: 109mm

D83AEX

- Woofer: 8" IMG - Fixed Angle
- Tweeter: 1" Aluminium
- Frequency Response: 38Hz-20kHz
- Power Handling: 50-125 Watts

- Diameter: 244mm
- Grille Diameter: 254mm
- Cutout Diameter: 222mm
- Mounting Depth: 105mm

D85EX

- Woofer: 8" IMG
- Mid-Range: 4" IMG Multi-motion Pivoting
- Tweeter: 1" Silk DPSD Multi-motion Pivoting
- Frequency Response: 36Hz-20kHz
- Power Handling: 50-150Watts

- Diameter: 244mm
- Grille Diameter: 254mm
- Cutout Diameter: 222mm
- Mounting Depth: 142mm

D105EX

- Woofer: 10" IMG
- Mid-Range: 4" IMG Multi-motion Pivoting
- Tweeter: 1" Silk DPSD Multi-motion Pivoting
- Frequency Response: 28Hz-20kHz
- Power Handling: 50-175 Watts

- Diameter: 286mm
- Grille Diameter: 296mm
- Cutout Diameter: 264mm
- Mounting Depth: 158mm





Shallow Depth In-Ceiling Speakers

Designed as a solution for restrictive installation applications.



Model: TF36
Part: STF3600

- Woofer: 3 1/2" Glass Fibre
- Tweeter: 3/4" DPSD™ Dome
- Frequency Response: 50Hz-20kHz
- Power Handling: 5-110 Watts
- Diameter: 244mm
- Grille Diameter: 254mm
- Cutout Diameter: 222mm
- Mounting Depth: 70mm

Bracket: BR68 REBR68  Enclosure: FBD82X6 



Model: TF34
Part: STF3400

- Woofer: 3 1/2" IMG
- Tweeter: 3/4" Aluminium Dome
- Frequency Response: 50Hz-20kHz
- Power Handling: 5-110 Watts
- Diameter: 244mm
- Grille Diameter: 254mm
- Cutout Diameter: 222mm
- Mounting Depth: 70mm

Bracket: BR68 REBR68  Enclosure: FBD82X6 



Model: TF64DT
Part: STF2T640

- Woofer: 6 1/2" IMG
- 2 Tweeters: 3/4" Aluminium Dome
- Frequency Response: 50Hz-20kHz
- Power Handling: 5-140 Watts
- Diameter: 244mm
- Grille Diameter: 254mm
- Cutout Diameter: 222mm
- Mounting Depth: 70mm

Bracket: BR68 REBR68  Enclosure: FBD82X6 




FITTING IN!

With a mounting depth of only 7cm speakers in the ThinFit collection meet the unique challenges presented by restrictive above-ceiling areas. Our team is proud to present a loudspeaker with superior sonic performance that installs in limited depths.







“There is no better contractor level loudspeaker on the planet!”
- Steve Beahan, Invision U.K. United Kingdom



P80 & P60 Collection

Carefully crafted with an impressive price to performance ratio, the Producer Collection is our entry-level offering that is anything but entry-level in sound quality. With five in-ceiling models there are a variety of options for any number of applications. The Producer Collection includes two dual-tweeter models producing stereo from a single speaker, a perfect solution for hallways, bathrooms and walk-in closets.



Model: P80
Part: SCP80100

- Woofer: 8" Poly
- Tweeter: 1" Silk Pivoting
- Frequency Response: 38Hz-20kHz
- Power Handling: 5-100 Watts
- Diameter : 273mm
- Grille Diameter: 279mm
- Cutout Diameter: 248mm
- Mounting Depth: 96mm

Bracket: BRP8  Enclosure: FBP8 



Model: P61
Part: SCP60150

- Woofer: 6 1/2" IMG
- Tweeter: 1" Aluminium Pivoting
- Frequency Response: 46Hz-20kHz
- Power Handling: 5-100 Watts
- Diameter : 223mm
- Grille Diameter: 233mm
- Cutout Diameter: 203mm
- Mounting Depth: 86mm

Bracket: BRP6  Enclosure: FBP6 



Model: P60
Part: SCP60100

- Woofer: 6 1/2" Poly
- Tweeter: 1" Silk Pivoting
- Frequency Response: 48Hz-20kHz
- Power Handling: 5-100 Watts
- Diameter : 223mm
- Grille Diameter: 233mm
- Cutout Diameter: 203mm
- Mounting Depth: 86mm

Bracket: BRP6  Enclosure: FBP6 

P80 & P60 DTCollection



Model: P80DT
Part: SCP2T80100

- Woofer: 8" Poly
- Tweeter: Dual 1" Silk
- Frequency Response: 38Hz-20kHz
- Power Handling: 5-100 Watts

- Diameter : 273mm
- Grille Diameter: 279mm
- Cutout Diameter: 248mm
- Mounting Depth: 96mm

Bracket:
BRP8 

Enclosure:
FBP8 



Model: P60DT
Part: SCP2T60400

- Woofer: 6 1/2" IMG
- Tweeter: Dual 1" Silk
- Frequency Response: 48Hz-20kHz
- Power Handling: 5-100 Watts

- Diameter : 223mm
- Grille Diameter: 233mm
- Cutout Diameter: 203mm
- Mounting Depth: 86mm

Bracket:
BRP6 

Enclosure:
FBP6 



Model: E60-6
Part: SCE600000

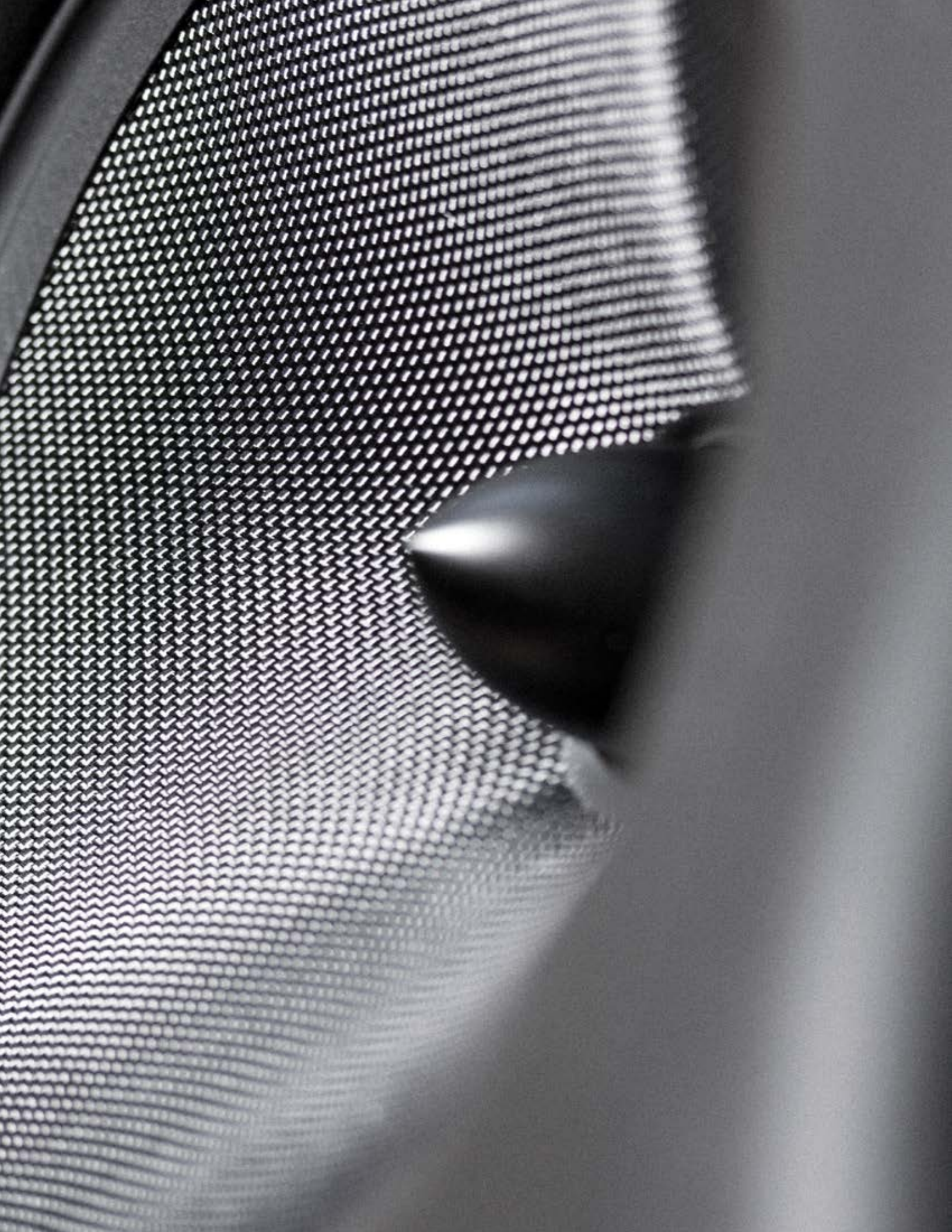
- Woofer: 6 1/2" Poly
- Tweeter: 1/2" PEI Pivoting
- Frequency Response: 48Hz-20kHz
- Power Handling: 5-100 Watts

- Diameter : 245mm
- Grille Diameter: 254mm
- Cutout Diameter: 203mm, 222mm
- Mounting Depth: 90mm

Bracket:
BRP68
BRP6 

Enclosure:
FBP6
FB8 

** Will work in either BRP6 Bracket or BR68 Bracket*



“Every loudspeaker I use must offer the customer the most performance for each dollar they spend. Experience has taught me I can trust Origin to deliver on that commitment.”

- Jason Verretta, Paramount Audio Video Corp, Denver, CO

WE *INVENTED* TOOL-LESS INSTALLATION.

SPRING INTO ACTION !

Securely mounting the speaker inside the wall is a necessity for full fidelity performance. The unique Spring-Lock™ mechanism clamps against the inside of the drywall creating uniform torque at each pressure point. This assures that the baffle will not warp and the integrity of the seal between the baffle and the drywall will remain constant.

One quarter turn is all it takes for the spring-loaded mechanism to snap into place with exactly the right pressure to secure the speaker. The complete fit and finish of the speaker has been advanced including the grille magnets being sealed behind plastic. Expect better sound and increased durability from the ***Composer Collection***.







Step Up to The Bar

Sound bars have become a critical element in family room and bedroom theatre systems. Simple to include and easy to install, they provide a huge improvement over the internal loudspeakers in a flat panel television. Reinforced with an in-wall, in-ceiling or freestanding subwoofer they can create an impressive, full-frequency sound field.

A perfect complement to extend both the Composer and Director Collections, the new SB3 from Origin fills the need for surface mounted front channels under a flat panel. A beautiful extruded aluminium cabinet and stylish cloth grille create a sophisticated silhouette.



Model: SB3

Part: SBC3000

- Extruded Aluminium Cabinets
- Woofers: 3 ½" Glass Fibre
- Tweeter: 1" DPSD™
- # of channels: 3
- Minimum Load: 8 Ohm
- Frequency Response: 65Hz
- Sensitivity: 90
- Dimensions: 1067 x 152 x 76mm
- Table-top Vibration Isolation Stand
- Wall-mount Kit

Big Sound, Small Package

For applications where surface mounted LCR's are required, Origin offers the new SB1. Utilising the same drivers as the SB3, each SB1 is in an extruded aluminium cabinet with dual 3 ½-inch woofers and a 1-inch DPSD™ tweeter. Stand or wall mountable, these attractive cabinets can be placed on the left and right of the video screen with the centre channel above or below the image. They can be arranged together across the bottom of the video display as well. They also serve as matching surround speakers for the SB3 if a surface mount speaker is required on the walls or on the ceiling.



Model: SB1

Part: SBC1000

- Extruded Aluminium Cabinets
- Woofers: 3 ½" Glass Fibre
- Tweeter: 1" DPSD™
- # of channels: 1
- Minimum Load: 8 0hm
- Frequency Response: 65Hz
- Sensitivity: 90
- Dimensions: 406 x 152 x 76mm
- Table-top Vibration Isolation Stand
- Wall-mount Kit



THTR60 Collection

Quad 6 ½” drivers partner with our patented DPSD 1” tweeter to deliver the accuracy and sonic linearity that was once only reserved for the worlds finest box speakers.



Model: THTR69
Part: SWML30900


- Woofer: Quad: 6 ½” Kevlar®
- Tweeter: 1” Silk DPSD Pivoting
- Frequency Response: 40Hz-20kHz
- Power Handling: 25-200 Watts
- Dimensions: 219 x 758mm
- Grille Dimensions: 231 x 769mm
- Cutout Dimensions: 200 x 736mm
- Mounting Depth: 95mm

Bracket:
BRL30 



Model: THTR67
Part: SWML30700

- Woofer: Quad 6 ½” Glass Fibre
- Tweeter: 1” Silk DPSD Pivoting
- Frequency Response: 40Hz-20kHz
- Power Handling: 10-200 Watts
- Dimensions: 219 x 758mm
- Grille Dimensions: 231 x 769mm
- Cutout Dimensions: 200 x 736mm
- Mounting Depth: 95mm

Bracket:
BRL30 

Our Theatre Collection will exceed critical expectations.
Better Than the Rest.



5 1/4"
(Competitor)

VS



6 1/2"

The Theatre Collection uses
larger woofers and midrange
drivers than any design we have
engineered before.



LCR60 Collection

The in-wall speaker was a major breakthrough in the early 1980's allowing homeowners to stop sacrificing real estate on the floor or the bookshelf and have the speakers blend into the wall.

The LCR60 collection builds on this tradition in a sleek form factor while delivering sound quality that is as impressive as its industrial design.



Model: LCR69
Part: SWML14900

- Woofer: 2x 6 1/2" Kevlar®
- Tweeter: 1" Silk DPSD Pivoting
- Frequency response: 51Hz-20kHz
- Power Handling: 25-175 Watts
- Dimensions: 190 x 386mm
- Grille Dimensions: 200 x 403mm
- Cutout Dimensions: 168 x 364mm
- Mounting Depth: 95mm



Model: LCR67
Part: SWML14700

- Woofer: 2x 6 1/2" Glass Fibre
- Tweeter: 1" Silk DPSD Pivoting
- Frequency response: 53Hz-20kHz
- Power Handling: 25-150 Watts
- Dimensions: 190 x 386mm
- Grille Dimensions: 200 x 403mm
- Cutout Dimensions: 168 x 364mm
- Mounting Depth: 95mm



Model: LCR65
Part: SWML14500

- Woofer: 2x 6 1/2" IMG
- Tweeter: 1" Silk DPSD Pivoting
- Frequency response: 55Hz-20kHz
- Power Handling: 25-150 Watts
- Dimensions: 190 x 386mm
- Grille Dimensions: 200 x 403mm
- Cutout Dimensions: 168 x 364mm
- Mounting Depth: 95mm



LCR30 Collection

Sweet, flowing musical movements and dramatic movie soundtracks are equally addressed by this impressive combination of art and technology. Discreetly installed into the wall, this collection is a promise of beauty and high-performance.



Model: LCR39
Part: SWML10800

- Woofer: 2x 3 1/2" Kevlar®
- Tweeter: 1" Silk DPSD
- Frequency Response: 70Hz-20kHz
- Power Handling: 25-80 Watts

- Dimensions: 133 x 260mm
- Grille Dimensions: 232 x 769mm
- Cutout Dimensions: 122 x 240mm
- Mounting Depth: 95mm

Bracket:
BRL10 

Enclosure:
FB10S 



Model: LCR37
Part: SWML10600

- Woofer: 2x 3 1/2" Glass Fibre
- Tweeter: 1" Silk DPSD
- Frequency Response: 70Hz-20kHz
- Power Handling: 25-80 Watts

- Dimensions: 133 x 260mm
- Grille Dimensions: 232 x 769mm
- Cutout Dimensions: 122 x 240mm
- Mounting Depth: 95mm

Bracket:
BRL10 

Enclosure:
FB10S 



C60 Collection

Our engineers invented the in-wall speaker, and re-imagining it is our team's passion. The Composer C60 Collection is the result of starting that process again with a blank canvas. Innovative driver designs combined with hours of critical listening and fine-tuning has resulted in this incredible offering.



Model: C69
Part: SWML12800

- Woofer: 4 x 8" Kevlar®
- Tweeter: 1" Silk DPSD Pivoting
- Frequency Response: 40Hz-20kHz
- Power Handling: 25-140 Watts

- Dimensions: 140 x 300mm
- Grille Dimensions: 149 x 311mm
- Cutout Dimensions: 118 x 279mm
- Mounting Depth: 95mm



Model: C67
Part: SWM12600

- Woofer: 4 x 8" Glass Fibre
- Tweeter: 1" Silk DPSD Pivoting
- Frequency Response: 43Hz-20kHz
- Power Handling: 25-125 Watts

- Dimensions: 140 x 300mm
- Grille Dimensions: 149 x 311mm
- Cutout Dimensions: 118 x 279mm
- Mounting Depth: 95mm



Model: C65
Part: SWM12400

- Woofer: 4 x 8" IMG
- Tweeter: 1" Aluminium Pivoting
- Frequency Response: 45Hz-20kHz
- Power Handling: 25-110 Watts

- Dimensions: 140 x 300mm
- Grille Dimensions: 149 x 311mm
- Cutout Dimensions: 118 x 279mm
- Mounting Depth: 95mm



Model: C63
Part: SWM12200

- Woofer: 4 x 8" Poly
- Tweeter: 1" Aluminium Pivoting
- Frequency Response: 45Hz-20kHz
- Power Handling: 25-110 Watts

- Dimensions: 140 x 300mm
- Grille Dimensions: 149 x 311mm
- Cutout Dimensions: 118 x 279mm
- Mounting Depth: 95mm



CIW60 Collection

Created to provide a cost effective means of sonically blending composer models and in-ceiling models from the director Collection, these three models round out the collection. Simply selecting a speaker with the same numeric designation from another collection will guarantee the speakers have the same sonic signature.



Model: CIW65

Part: CIW6500

- Woofer: 6 ½" IMG
- Tweeter: 1" DPSD™ Pivoting
- Frequency Response: 45Hz-20kHz
- Power Handling: 25-110 Watts
- Dimensions: 305 x 208mm
- Grille Dimensions: 315 x 218mm
- Cutout Dimensions: 273 x 176mm
- Mounting Depth: 76mm

Bracket:
BRL13 



Model: CIW63

Part: CIW6300

- Woofer: 6 ½" IMG
- Tweeter: 1" Aluminium Pivoting
- Frequency Response: 45Hz-20kHz
- Power Handling: 25-110 Watts
- Dimensions: 305 x 208mm
- Grille Dimensions: 315 x 218mm
- Cutout Dimensions: 273 x 176mm
- Mounting Depth: 76mm

Bracket:
BRL13 



Model: CIW61

Part: CIW6100

- Woofer: 6 ½" Poly
- Tweeter: 1" Silk Dome Pivoting
- Frequency Response: 45Hz-20kHz
- Power Handling: 25-110 Watts
- Dimensions: 305 x 208mm
- Grille Dimensions: 315 x 218mm
- Cutout Dimensions: 273 x 176mm
- Mounting Depth: 76mm

Bracket:
BRL13 



CSUB10 Collection (Composer Collection)

Bass is a necessity for any home theatre or dedicated listening area. Back in the 1980s, our team dreamed up a clutter-free solution for delivering the big and powerful experience of box subwoofers. Building an in-wall subwoofer poses many challenges to engineers seeking to circumvent physics in a category that is predominately concerned with larger size and more power. Our team has spent more time than any other refining the art and science of the in-wall subwoofer.



Model: CSUB10R

Part: CSUB1000R

- Woofer: 10" Aluminium
- Frequency Response: 30Hz-250KHz
- Power Handling: 5-250 Watts
- Dimensions: 88 x 330 x 430mm
- Grille Dimensions: 360 x 360mm
- Cutout Dimensions: 333 x 333mm
- Mounting Depth: 89mm

RETROFITABLE



Model: CSUB10NCE

Part: CSUB1000NCE

- Dimensions: 1120 x 330 x 88mm
- Cutout Dimensions: 268 x 268mm
- Mounting Depth: 88mm

* Must be used with the CSUB10N

NEW CONSTRUCTION



Model: CSUB10N

Part: CSUB1000N

- Woofer: 10" Aluminium
- Frequency Response: 30Hz-250KHz
- Power Handling: 10-500 Watts
- Dimensions: 1120 x 330 88mm (with CSUB10NCE)
- Grille Dimensions: 297 x 297mm
- Cutout Dimensions: 268 x 268mm
- Mounting Depth: 88mm

* Must be used with w/CSUB10NCE

NEW CONSTRUCTION

DSUB6 Collection (Director Collection)

Progressively engineered with a dual-firing woofer design and bandpass enclosure, the Director Subwoofers bring bass to the forefront of any in-ceiling performance with unmatched aesthetics. The collection has been designed to provide invigorating low frequencies while leaving minimal visual intrusion in combination with three different sizes of Director Collection in-ceiling speakers.



Model: DSUB6F68

Part: DSUB6F680

- Woofer: Dual 6 1/2" Poly
- Frequency Response: 33Hz-200Hz
- Power Handling: 100-250 Watts

* Should be used with D60 and D80 series speakers

- Dimensions: 201 x 284 x 480mm
- Grille Diameter: 254mm
- Cutout Diameter: 222mm
- Mounting Depth: 203mm

Amplifier:

SUBA150



Model: DSUB6F5

Part: DSUBF500

- Woofer: Dual 6 1/2" Poly
- Frequency Response: 33Hz-200Hz
- Power Handling: 100-200 Watts

* Should be used with D50 series speakers

- Dimensions: 201x 284x 480mm
- Grille Diameter: 183mm
- Cutout Diameter: 149mm
- Mounting Depth: 203mm

Amplifier:

SUBA150



Model: DSUB6F3

Part: SDSUB6F300

- Woofer: Dual 6 1/2" Poly
- Frequency Response: 33Hz-200Hz
- Power Handling: 100-150 Watts

* Should be used with D30 series speakers

- Dimensions: 201 x 284 x 480mm
- Grille Diameter: 100mm
- Cutout Diameter: 89mm
- Mounting Depth: 203mm

* Both round and square grilles Included

Amplifier:

SUBA150

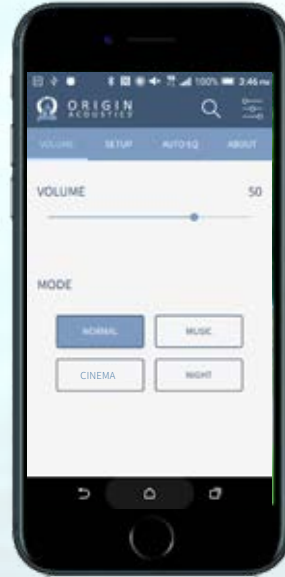




Clearly Defining your Low-frequency Expectations



The proprietary Deep™ Sub phone app is available for iOS® and Android® operating systems. Here you can see the various parameters that can be adjusted. Included are Volume Level, Low Pass, Phase, Auto off/on, EQ and Delay.



Volume can be set and saved as one of four presets indicated as Normal, Music, Cinema and Night modes.



The Auto EQ option allows for the phone's microphone to be used to analyse the sub's output in the room and automatically adjust for the desired seating position.



Bass frequencies have the greatest emotional effect on our audio experience. Whether you are listening to acoustic jazz, speed metal or opera, the low-end resonates in your heart and in your soul. The new Deep™ subs from Origin Acoustics will put that rumble in your chest and a smile on your face. Fast and articulate, they have the ability to envelope you in low frequency crescendos and still reproduce the fading thunder from a distant rainstorm.

With four models from a single eight to dual twelves, there is a sub for every system and at every performance level. With sound that will impress and power to spare, the Deep subs will redefine your low-frequency expectations.



Model: SUBDD12EQ

Part: SUBDDEQ1200

- Woofer: Dual 12" Aluminium
- Frequency Response: 17- 180HZ
- Amplifier Power: Class D 1200 Watts Peak
- Complete bluetooth control via phone app
- Crossover Frequency: 50-150HZ
- Weight: 63 lbs.
- Dimensions: 432 x 432 x 483mm
- Input LFE RCA
- Signal Sensing On/Off
- 115/230 Voltage Auto Switch
- Cabinet Finish – Cloth wrapped, Aluminium Top



Model: SUBD12EQ

Part: SUBDEQ12000

- Woofer: 12" Aluminium Active, 12" Passive
- Frequency Response: 22-180Hz
- Amplifier Power: Class D 1000 Watts Peak
- Complete bluetooth control via phone app
- Crossover Frequency: 50-150HZ
- Weight: 55 lbs.
- Dimensions: 445 x 445 x 445mm
- Input LFE RCA
- Signal Sensing On/Off
- 115/230 Voltage Auto Switch
- Cabinet Finish – Cloth Wrapped, Aluminium Top



Model: SUBD10EQ

Part: SUBDEQ10000

- Woofer: 10" Aluminium Active, 10" Passive
- Frequency Response: 26-180Hz
- Amplifier Power: Class D 600 Watts Peak
- Complete bluetooth control via phone app
- Crossover Frequency: 50-150HZ
- Weight: 31 lbs.
- Dimensions: 345 x 345 x 345mm
- Input LFE RCA
- Signal Sensing On/Off
- 115/230 Voltage Auto Switch
- Cabinet Finish – Cloth Wrapped, Aluminium Top



Model: SUBD8EQ

Part: SUBDEQ8000

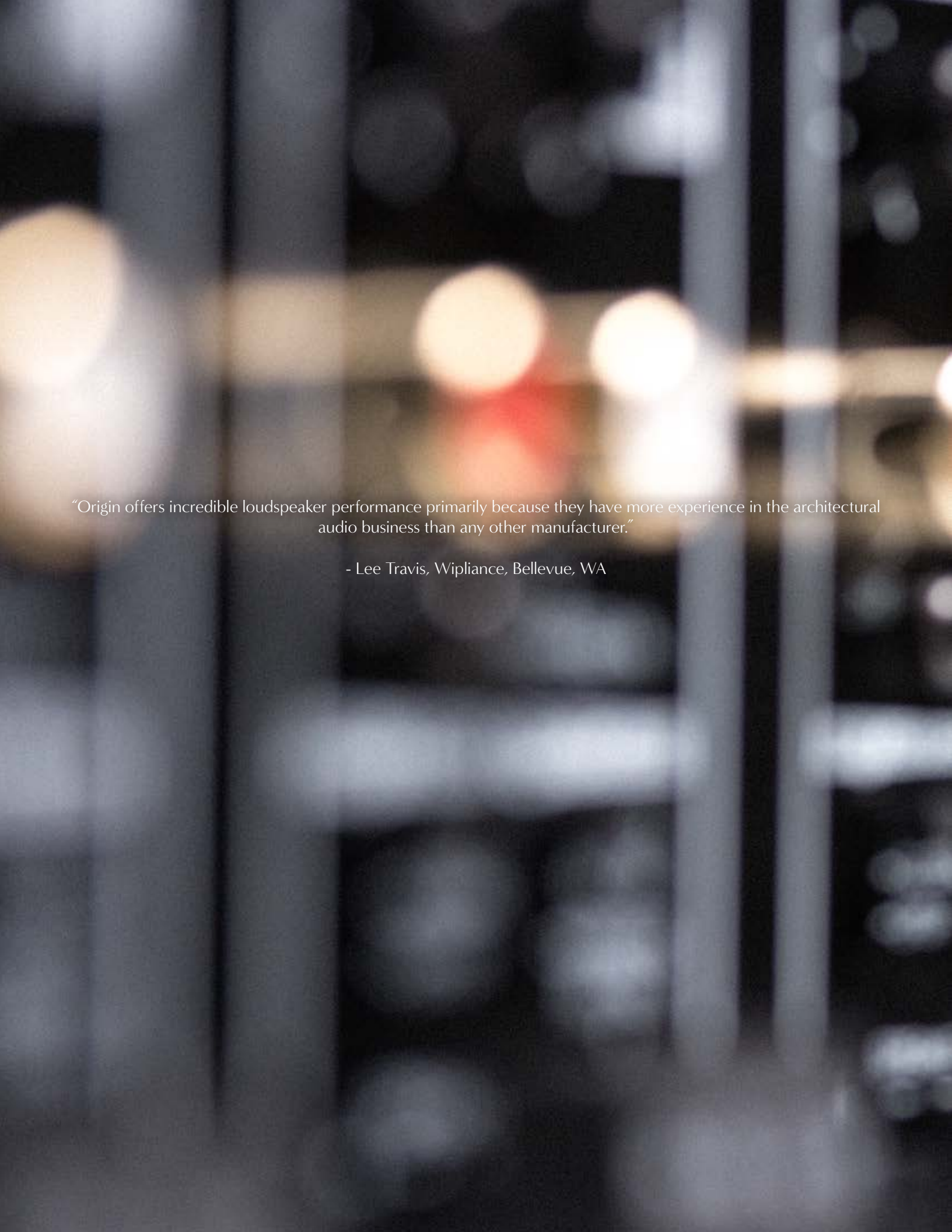
- Woofer: 8" Aluminium Active, 8" Passive
- Frequency Response: 31-180Hz
- Amplifier Power: Class D 300 Watts Peak
- Complete bluetooth control via phone app
- Crossover Frequency: 50-150HZ
- Weight: 24 lbs.
- Dimensions: 292 x 292 x 292mm
- Input LFE RCA
- Signal Sensing On/Off
- 115/230 Voltage Auto Switch
- Cabinet Finish – Cloth Wrapped, Aluminium Top



Model: SUBV10

Part: SBXSUBV100600

- Woofer: 10" Aluminium
- Frequency Response: 32Hz ± 3dB
- Amplifier Power: Class D 150 Watts
- Dimensions: 330 x 330 x 330mm

A blurred background of a server rack with glowing lights. The lights are out of focus, creating a bokeh effect. The colors are primarily warm, with yellows and oranges, and a small red light is visible in the center. The overall tone is dark and technical.

“Origin offers incredible loudspeaker performance primarily because they have more experience in the architectural audio business than any other manufacturer.”

- Lee Travis, Wipliance, Bellevue, WA



9

CH9

INPUT SOURCE

-GLOBAL-

-SPDF-

SPEAKER

R+ R- L- L+

Amplifiers

An amplifier should be transparent, it should literally be wire with gain. At Origin we pride ourselves in offering no-compromise amplifiers to drive our loudspeakers. Whether you require a stereo or multi-channel version, our amplifiers feature high-efficiency, Class-D power that is built to last and will reproduce the nuances of every recording.



Model: A1250

Part: AMP02X15000

- # of Channels: 12
- Power: 50 Watts
- Minimum Load: 4 Ohm
- Inputs: 8 Stereo Local 2 Global 1 Digital S/PDIF
- Dimensions: 450 x 89 x 340mm



Model: A2150

Part: AMP02X15000

- # of Channels: 2
- Power: 150 Watts
- Minimum Load: 4 Ohm
- Inputs: 1 Stereo 1 Digital SPDIF
- Dimensions: 450 x 89 x 340mm

Subwoofer Amplification

Adding a subwoofer to any speaker complement always enhances the experience. A dedicated amplifier to drive that sub adds a dramatic level of performance to the system. Being able to independently adjust the sub amp channel so the sub blends seamlessly with the satellites creates a truly musical presentation.

Not only is this a more powerful sibling to the A-150, but it offers extensive adjustability through its integrated digital EQ and low-pass filter. If you want in-ground subs to literally shake the earth, the A-500 is the amplifier for you.



Model: SUBA500
Part: AMPSUB1X500

- # of Channels: 1
- Power: 500 Watts Class D Power
- Inputs: Line Level for LFE or amp preout
Speaker Level
- Analogue Loop for Daisy Chain Option
- Stable to 4 Ohms
- Dimensions: 45 x 435 x 264mm

The A150 is a no-nonsense, straight forward power channel that can drive an in-wall sub to substantial levels and match up with any speakers in the line. It is also perfect to drive the outdoor patio sub to augment on-wall or landscape speakers.



Model: SUBA150
Part: AMPSUB1X500

- # of Channels: 1
- Power: 150 Watts Class D Power
- Inputs: Line Level for LFE or amp preout
Speaker Level
- Analogue Loop for Daisy Chain Option
- Dimensions: 51 x 432 x 299mm



This Is What Happens When WORLDS COLLIDE.

Valet Amplifiers meet The Amazon Dot. Things are about to get interesting.

Origin Acoustics introduces Valet Amplifiers. The world's first and only premium amplifiers purpose-designed to combine the voice control genius of the Amazon Dot with the performance and ergonomics of the finest in Custom Installation.

Valet Amplifiers seamlessly integrate with the Amazon Echo Dot to create an easy to use, interactive, amplification network. Available in 50w Four Zone/Four Dot and Six Zone/Four Dot configurations, Valet Amplifiers can be connected to any speaker. Each zone sends power to and returns audio from the Dot using groundbreaking Origin Acoustics technology.



The Valet Amplifiers system connects the Amazon Echo Dot into any multi-zone system to create an interactive voice control network that's as easy to use as the best known consumer tech products. Origin Acoustics is based on a heritage of innovation, it stands to reason that Valet has plenty of it to talk about, as well.



amplifiers
valet



Enjoy voice-activated control of virtually all of your music libraries, including Pandora, Amazon Music and Spotify. Valet will access and play them all directly from the Amazon Dot.

Easily connect an Amazon Echo Dot using a single, convenient Cat-5 cable. Valet's proprietary, patent pending muting circuit that lets you tell Alexa when you need a momentary break in the music and when you're ready to get back into it. If that's still not enough, add Origin Acoustics patented Tool-less Mounting System, that makes hiding the Dots in the ceiling a neat, clean and beautiful way to enjoy the extensive list of Valet's benefits without sacrificing any of your room design.



New Category

There is now a product that addresses custom installation and voice control, the hottest consumer electronics category.

Valet Amplifiers are the backbone of a fully integrated, voice controlled home. Don't let this new technology leave you voiceless.



Origin Quality

We fully stand behind all of our products. These amplifiers are rock solid. Provide the amp and deliver more speakers.



Model: AV850

Part: AMPV8500

- # of Channels: 8
- Power: 50 Watts
- Minimum Load: 4 Ohm
- Inputs: 8 Stereo Local 2 Global 1 Digital S/PDIF
- Dimensions: 450 x 89 x 340mm



* Amazon Echo Dot Not Included



Model: BZ68DAB

Part: BZ68DAB00

- BZ68 With Grille
- Dot Adapter
- Balun

4 Pack

Model: BZ50DAB

Part: BZ50DAB00

- BZ25 With Grille
- Dot Adapter
- Balun

4 Pack

Model: BZ10DAB

Part: BZ10DAB00

- BZ10 With Grille
- Dot Adapter
- Balun

4 Pack

Multi Environmental DSP3-700 Built Like a Tank.

The new DSP3-700 is the perfect complement for your clients' high-performance outdoor systems.



Model: DSP3-700

Part: AMPD03X7000

- # of channels: 3
- Dimensions: 433 x 88 x 357mm (Without mounts)
482 x 88 x 357mm (With mounts)
- Power:
 - 8 Ω Load 500 Watts
 - 4 Ω Load 700 Watts, 70v 700 Watts,
 - Bridge Mode 8 Ω 1,400 Watts
- USB program interface
- DSP 24/96 Sampling/Resolution
- Presets: 64
- Frequency Response: 20Hz – 48kHz
- S/N >105dB
- THD 0.05%
- Rack Space 2U
- Protection:
 - Clip Limiting
 - Temperature
 - Over Current
 - DC
 - HF on outputs

The **Only Amplifier** Purpose Built for High Performance Landscape Systems.

Flexible Options

Designing a system with the DSP3-700 is a breeze. With a selection of DSP presets preloaded to match every outdoor speaker in our arsenal, set-up is as easy as selecting the one that's right for your design configuration. Or, with a total of 64 presets, you can customize and store settings for each specific project should you choose. Independent settings can be assigned to each of the three channels, which can also independently drive 4Ω or 70v signals.

Self Defence

Integrated compressors and limiters stand guard to protect the loudspeakers from abuse and ensure the long, healthy life of the system. A signal sensing circuit awakens the amplifier when the signal is detected saving power when not in operation but springing to life when needed.

Ease of Access

On the front of its artistically crafted faceplate is a USB connection. Plug in your laptop directly for setup without dealing with network firewalls or other limitations and take advantage of the powerful, full featured app to adjust a myriad of parameters for ultimate performance.

Drive Hard, Play Nice

Along with its powerful output you will find the DSP-700 provides the clarity and nuance you would expect from a high-end amplifier. It's all about the music.



Speaker Selectors

Origin Speaker Switchers allow the homeowner to run multiple pairs of speakers off of a single amplifier or receiver. Four and six pair versions allow the user to turn individual pairs on and off. For a more advanced system there is a unit that offers not only 6 pair on/off control but also individual volume control for each pair of speakers as well. It also allows for the connection of two different sources to make it possible to select one or the other of the sources for each pair of speakers. Each unit includes an impedance matching circuit to protect the amplifier. Speaker wires are connected with phoenix connectors and require a screwdriver to attach and detach speakers.



Model: DS6VC

Part: AC6VC10000

- Dual source speaker selector for 6 pairs of speakers with volume controls and automatic impedance protection



Model: SL6

Part: AC6SEL1000

- Standard speaker selector for 6 pairs of speakers with automatic impedance protection



Model: SL4

Part: AC4SEL1000

- Standard speaker selector for 4 pairs of speakers with automatic impedance protection

Volume Controls

A simple and easy way to control sound levels in remote rooms, **Origin volume controls adjust high-level (also known as speaker level) signals at or near the loudspeaker.** Usually mounted in a light switch plate near the light switch itself, these controls are available in rotary and sliding switch formats. They utilize transformers to attenuate the sound and can be adjusted from completely off to the maximum volume set at the amplifier. Each volume control can attenuate both stereo channels or can be used with only one channel connected in mono mode.



Model: OV100
Part: ACOVC1000

- Impedance matching Rotary weatherproof outdoor volume control 70-100 watts (Gray)



Model: VS100
Part: ACOVC1000

- Impedance matching slider volume control 70-100 watts (includes white faceplate)



Model: VI100
Part: ACVC100000

- Impedance matching rotary volume control 70-100 watts (includes white faceplate)



Model: V70V
Part: AC70VC10000

- Rotary 70 Volt Volume Control (includes white faceplate)



Model: VI50
Part: ACVC50000

- Impedance matching rotary volume control 30-50 watts (includes white faceplate)



Model: ADC8
Part: ADC8000

- Volume control distribution hub connecting up to 8 pairs of speakers to a single amplifier





“Indoors and outdoors, I can depend on Origin for the best sound quality and the most efficient installation.”
- Steve Ambrogio, At Home Theatre, Carlsbad, CA





LS60 & LS40 / OSUB Collection

Filling your outdoor environment with quality music that appears to come from nowhere is now a very real expectation. Hidden away in flower beds and planters or placed around the pool or other water features, the Landscape Collection can fill the entire yard with a sound that is sure to enhance every outdoor event from a pool party to a wedding reception.



Model: LS64
Part: OLS6600

- Woofer: 6" Poly, Passive Radiator
- Tweeter: 1" Titanium
- Frequency Response : 60Hz-20kHz
- Impedance: 8 Ohm/70V
- Power Handling: 5-150 Watts
- Dimensions: 279 x 178 x 178mm

* Multiple 70V Tap Settings



Model: LS44
Part: OLS4400

- Woofer: 4 1/2" Poly
- Tweeter: 3/4" Titanium
- Frequency Response : 80Hz-20kHz
- Impedance: 8 Ohm/70V
- Power Handling: 5-150 Watts
- Dimensions: 211 x 135 x 135mm

* Multiple 70V Tap Settings



Model: OBSUB12
Part: OBSUB12000

- Woofer: 12" Poly
- Frequency Response : 23Hz-100kHz
- Impedance: 8 Ohm/70V
- Power Handling: 300 Watts
- Dimensions: 451 x 451 x 597mm



Model: OBSUB10
Part: OBSUB10000

- Woofer: 10" Poly
- Frequency Response : 32Hz-100kHz
- Impedance: 8 Ohm/70V
- Power Handling: 200 Watts
- Dimensions: 400 x 400 x 546mm



Model: OBSUB8
Part: OBSUB8000

- Woofer: 8" Poly
- Frequency Response : 39Hz-100kHz
- Impedance: 8 Ohm/70V
- Power Handling: 100 Watts
- Dimensions: 315 x 538 x 315mm



Model: OBSUB10P
Part: OSUB10P1000

- Woofer: 10" Poly
- Frequency Response : 32Hz-150KHz
- Impedance: 8 Ohm/70V
- Power Handling: 5-150 Watts
- Dimensions: 400 x 400 x 286mm



LS60 & LS40 / OSUB Collection (Accessories)



Model: LSLS
Part: OLALS1000

- Large spike for LS60 Series, LS40 Series



Model: LSSS
Part: OLASS1000

- Small spike for LS60 Series, LS40 Series



Model: LFSM
Part: OLAFM1000

- Surface Mount for LS60 Series, LS40 Series, AS4SAT Series



Model: OSUB10PB
Part: OSUB10BASE

- Base Plate for use With OSUB10 When Used in Landscape

The **Only Amplifier** Purpose Built for High Performance Landscape Systems.



Model: DSP3-700
Part: AMPD03X7000

- # of channels: 3
- Dimensions: 433 x 88 x 357mm (Without mounts)
 482 x 88 x 357mm (With mounts)
- Power:
 - 8 Ω Load 500 Watt
 - 4 Ω Load 700 Watts, 70v 700 Watts,
 - Bridge Mode 8 Ω 1,400 Watts
- USB program interface
- DSP 24/96 Sampling/Resolution
- Presets: 64
- Frequency Response: 2Hz – 48kHz
- S/N >105dB
- THD 0.05%
- Rack Space 2U
- Protection:
 - Clip Limiting
 - Temperature
 - Over Current
 - DC
 - HF on outputs



Seasons Outdoor Collection

Taking entertainment outside is a balance of audible accuracy, dispersion and power. The Seasons On-wall Collection utilizes a unique driver configuration in a triangular cabinet with active woofers and tweeters firing forward and dual passive radiators firing off the back two sides. This means substantial bass and greater achievable volume levels to fill the yard, deck or pool area with impressive sound.



Model: OS67

Part: OCS6700B, OCS6700W

- Woofer: 4 x 8" Glass Fibre
2 Passive Radiator
- Tweeter: 1" Aluminium
- Enclosure : HDPE
- Grille: Aluminium
- Frequency Response: 52Hz-20kHz
- Power Handling: 5-80 Watts
- Dimensions: 330 x 178 x 178mm



Model: OS65DT

Part: OCS6500DTB, OCS6500DTW

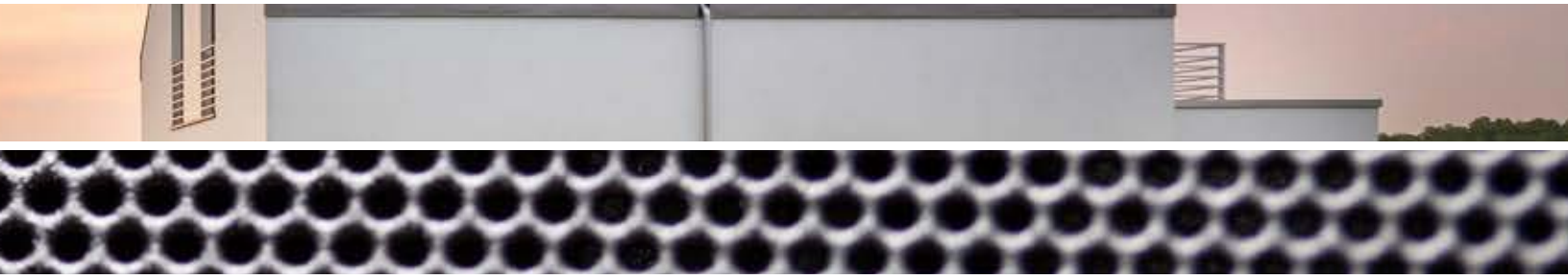
- Woofer: 4 x 8" IMG
2 Passive Radiator
- Tweeter: 1" Aluminium
- Enclosure : HDPE
- Grille: Aluminium
- Frequency Response: 58Hz-20kHz
- Power Handling: 5-100 Watts
- Dimensions: 330 x 178 x 178mm



Model: OS65

Part: OCS6500B, OCS6500W

- Woofer: 4 x 8" IMG
2 Passive Radiator
- Tweeter: 1" Aluminium
- Enclosure : HDPE
- Grille: Aluminium
- Frequency Response: 58Hz-20kHz
- Power Handling: 5-70 Watts
- Dimensions: 330 x 178 x 178mm

**Model: OS56**

Part: OCS5600DTB, OCS5600DTW

- Woofer: 5 ¼" Glass Fibre
2 Passive Radiator
- Tweeter: ¾" Aluminium
- Enclosure : HDPE
- Grille: Aluminium
- Frequency Response: 60Hz-20kHz
- Power Handling: 5-70 Watts
- Dimensions: 267 x 178 x 178mm

**Model: OS54DT**

Part: OCS5400DTB, OCS5400DTW

- Woofer: 5 ¼" IMG
- Tweeter: ¾" Aluminium
- Enclosure : HDPE
- Grille: Aluminium
- Frequency Response: 63Hz-20kHz
- Power Handling: 5-80 Watts
- Dimensions: 267 x 178 x 178mm

**Model: OS54**

Part: OCS5400B, OCS5400W

- Woofer: 5 ¼" IMG
- Tweeter: ¾" Aluminium
- Enclosure : HDPE
- Grille: Aluminium
- Frequency Response: 63Hz-20kHz
- Power Handling: 5-60 Watts
- Dimensions: 267 x 178 x 178mm



AS41SYS & AS4SAT Collection

The Acoustic Landscape AS41 Hi-Fi Landscape Audio System brings stunning sound to the backyard with four 4.5” camouflaged enclosed satellite speakers and a bass-boosting 8” in-ground subwoofer, all the while remaining completely hidden from sight in landscape foliage. Expand the system with up to four AS4SAT speakers for coverage up to 232 square metres.



Model: AS41SYS

Part: AS4100SYS (4 Satellite & 1 Subwoofer)

- Satellite Woofer: 4 ½” Poly
- Tweeter: ¾” PEI
- Subwoofer: 8” Poly
- Frequency Response: 39Hz-20kHz
- Impedance: 8 ohm (systems)
- Power Handling: 100-200 Watts
- Dimensions: 132 x 142 x 180mm, 233 x 470 x 233mm



Model: AS4SAT

Part: AS4000SAT (2 Satellites)

- Satellite Woofer: 4 ½” Poly
- Tweeter: ¾” PEI
- Frequency Response: 70Hz-20kHz
- Impedance: 6 ohm - 6 Sats, 4 ohm - 8 Sats
- Power Handling: 100-200 Watts
- Dimensions: 132 x 142 x 180mm

(Accessories)



Model: ASPC

Part: ASPC1000

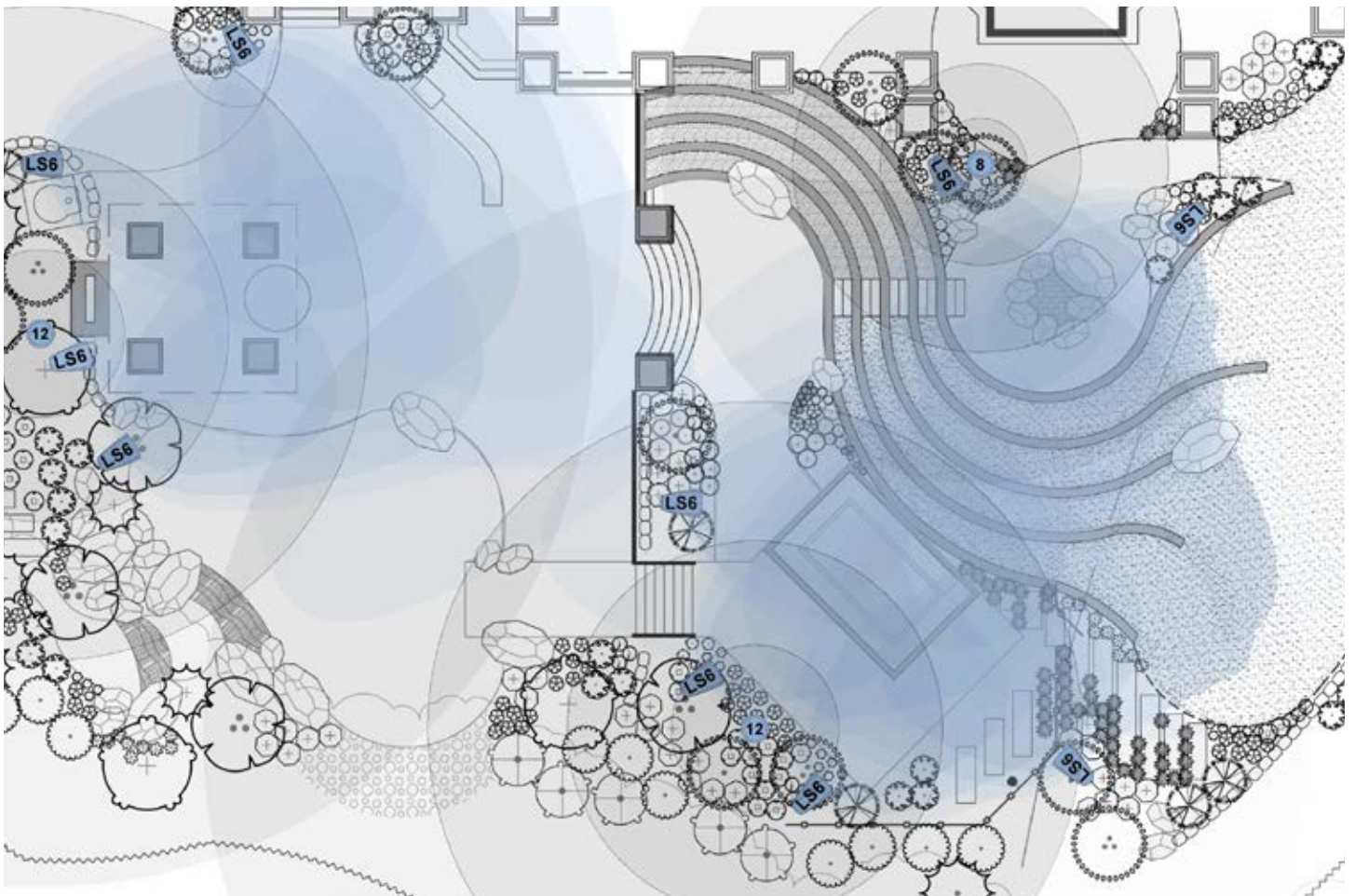
- Acoustic Landscape Pivoting Connector for AS4SAT garden satellite speakers . For use with Landscape Series Mounts .

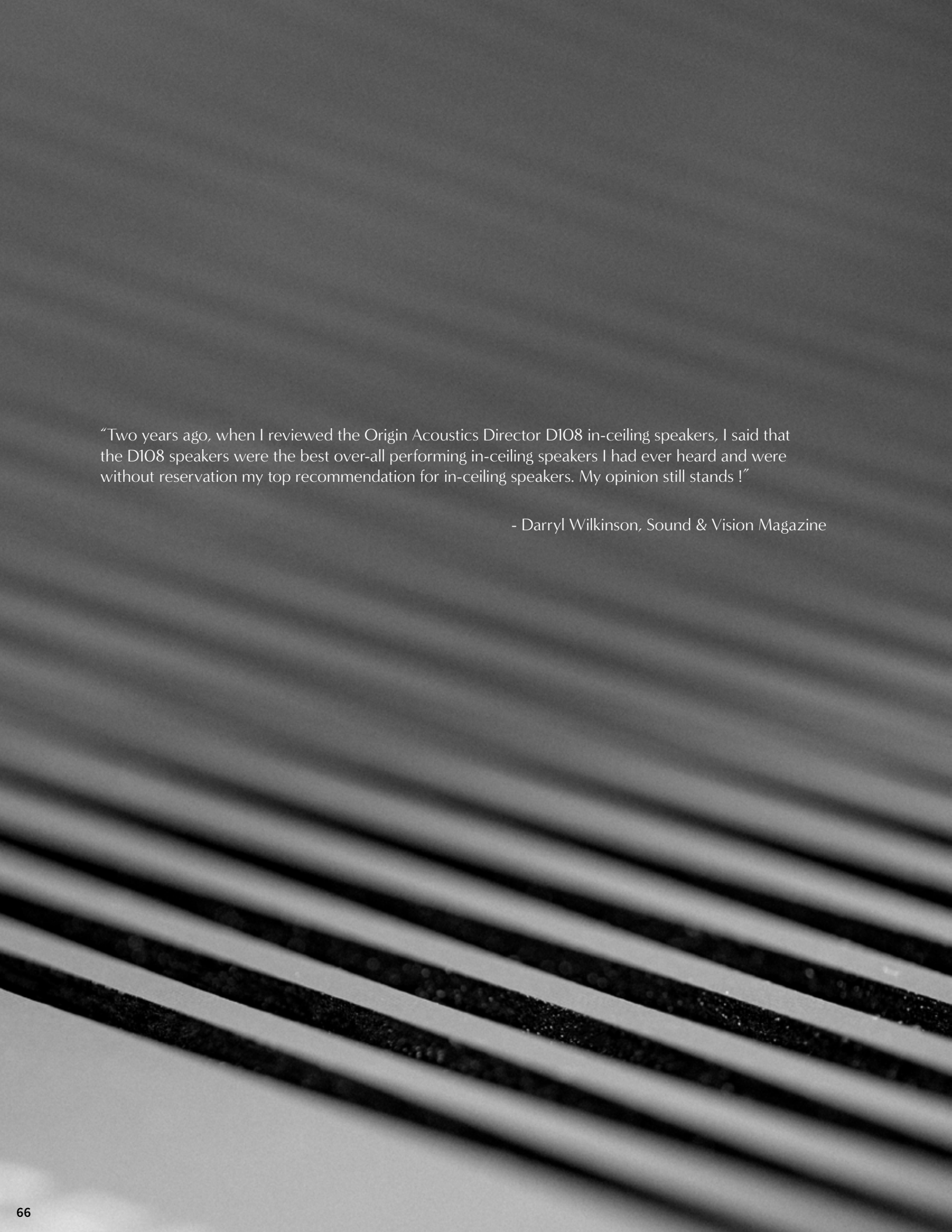


Design the Perfect Outdoor System

We understand that designing a perfect landscape system to WOW your customers can be challenging and time-consuming.

The Origin Acoustics Design Services team will provide you with an amazing landscape system design with detailed illustrations and proposals. With unlimited options for mounting into trees, underneath soffits, and camouflaged in-ground among plants, Origin Acoustics will provide the ultimate custom-tailored outdoor listening experience.





“Two years ago, when I reviewed the Origin Acoustics Director D108 in-ceiling speakers, I said that the D108 speakers were the best over-all performing in-ceiling speakers I had ever heard and were without reservation my top recommendation for in-ceiling speakers. My opinion still stands !”

- Darryl Wilkinson, Sound & Vision Magazine

Round Replacement Grilles

STANDARD & WEATHER-X®

In most ceiling applications a round grille is preferred, which is why we ship one with every ceiling speaker. Powder coated steel trimmed in a thin plastic ring with simple magnetic attachment, completes the speakers installation.

Model	Description	UNIT
GR3	Round Grille for Director 3" In-ceiling Speakers	
GR3WX	Round Grille for Director 3" In-ceiling Speakers with Weather-X™ Coating	
GR5	Round Grille for Director 5" In-ceiling Speakers	
GR5WX	Round Grille for Director 5" In-ceiling Speakers with Weather-X™ Coating	
GR68	Round Grille for Director 6.5"/8" and Thin-fit In-ceiling Speakers	
GR68WX	Round Grille for Director 6.5"/8" and Thin-fit In-ceiling Speakers with Weather-X™ Coating	
GR10	Round Grille for Director 10" In-ceiling Speakers	
GR10WX	Round Grille for Director 10" In-ceiling Speakers with Weather-X™ Coating	
GR60P	Round Grille for Producer 6.5" In-ceiling Speakers	
GR80P	Round Grille for Producer 8" In-ceiling Speakers	

Square & Rectangle Replacement Grilles

Because of other ceiling elements or interior design factors, a square grille may be required. This option is available in the same finish materials as the round grille and magnetically installs without the need for any additional mounting accessories.

Model	Description	UNIT
SQ3	Square Grille for Director 3" In-ceiling Speakers	
SQ3WX	Square Grille for Director 3" In-ceiling Speakers With Weather-X™ Coating	
SQ5	Square Grille for Director 5" In-ceiling Speakers	
SQ5WX	Square Grille for Director 5" In-ceiling Speakers with Weather-X™ Coating	
SQ68	Square Grille for Director 6.5"/8" and Thin-fit In-ceiling Speakers	
SQ68WX	Square Grille for Director 6.5"/8" and Thin-fit In-ceiling Speakers with Weather-X™ Coating	
SQ10	Square Grille for Director 10" In-ceiling Speakers	
SQ10WX	Square Grille for Director 10" In-ceiling Speakers with Weather-X™ Coating	
SQ6P	Square Grille for Producer 6.5" In-ceiling Speakers	
SQ8P	Square Grille for Producer 8" In-ceiling Speakers	

Model	Description	UNIT
GR30LCR	Rectangle Grille for Composer 3" In-wall Speakers (LCR30's)	
GR30LCRWX	Rectangle Grille for composer 3" In-Wall Speakers With Weather X™ Coating (LCR30'S)	
GR60C	Rectangle Grille for Composer 6" In-wall Speakers (C60s)	
GR60CIW	Rectangle Grille for Composer 6.5" In-wall Speakers (CIW60'S)	
GR60LCR	Rectangle Grille for Composer 6.5" In-wall Speakers (LCR60's)	
GR60LCRWX	Rectangle Grille for Composer 6.5" In-wall Speakers with Weather-X™ Coating (LCR60's)	
GR60THTR	Rectangle Grille for Composer 6.5" In-wall Speakers (THTR60's)	
GR60THTRWX	Rectangle Grille for Composer 6.5" In-wall Speakers with Weather-X™ Coating (THTR60's)	



WEATHER-X™

Tool-less Weather-X Bayonet Rings with Grilles

Make it weatherproof. The BZ kits features our proprietary Weather-X technology, allowing for all Director 3", 6" and 8" speakers to be installed in outdoor soffits, yachts, bathrooms, and showers. Backed by a lifetime warranty, this installation kit protects the speaker from showing any signs of rust or grille discoloration over time.



Model	Description	UNIT
BZ3WX	Tool-less Bayonet Ring and Round Grille for Director 3" in-ceiling Speakers With Weather-X™ Coating	
BZ3SQWX	Tool-less Bayonet Ring and Square Grille for Director 3" in-ceiling Speakers With Weather-X™ Coating	
BZ5WX	Tool-less Bayonet Ring and Round Grille for Director 5" in-ceiling Speakers With Weather-X™ Coating	
BZ5SQWX	Tool-less Bayonet Ring and Square Grille for Director 5" in-ceiling Speakers With Weather-X™ Coating	
BZ68WX	Tool-less Bayonet Ring and Round Grille for Director 6.5" and 8" in-ceiling Speakers With Weather-X™ Coating	
BZ68WX-8	Tool-less Bayonet Ring and Round Grille for Director 6.5" and 8" in-ceiling Speakers With Weather-X™ Coating	
BZ68SQWX	Tool-less Bayonet Ring and Square Grille for Director 6.5" and 8" in-ceiling Speakers With Weather-X™ Coating	
BZ68SQWX-8	Tool-less Bayonet Ring and Square Grille for Director 6.5" and 8" in-ceiling Speakers With Weather-X™ Coating	
BZ10WX	Tool-less Bayonet Ring and Round Grille for Director 10" In-ceiling speakers With Weather-X™ coating	
BZ10WX-8	Tool-less Bayonet Ring and Round Grille for Director 10" In-ceiling speakers With Weather-X™ coating	
BZ10SQWX	Tool-less Bayonet Ring and Square Grille for Director 10" in-ceiling Speakers With Weather-X™ Coating	
BZ10SQWX-8	Tool-less Bayonet Ring and Square Grille for Director 10" in-ceiling Speakers With Weather-X™ Coating	

STANDARD

Tool-less Bayonet Rings with Grilles

Designed for flexibility in new home construction.

Model	Description	UNIT
BZ3	Tool-less Bayonet Ring and Round Grille for Director 3" in-ceiling Speakers	
BZ3SQ	Tool-less Bayonet Ring and Square Grille for Director 3" in-ceiling Speakers	
BZ5	Tool-less Bayonet Ring and Round Grille for Director 5" in-ceiling Speakers	
BZ5SQ	Tool-less Bayonet Ring and Square Grille for Director 5" in-ceiling Speakers	
BZ68	Tool-less Bayonet Ring and Round Grille for Director 6.5" and 8" in-ceiling Speakers	
BZ68-8	Tool-less Bayonet Ring and Round Grille for Director 6.5" and 8" in-ceiling Speakers	
BZ68SQ	Tool-less Bayonet Ring and Square Grille for Director 6.5" and 8" in-ceiling Speakers	
BZ68SQ-8	Tool-less Bayonet Ring and Square Grille for Director 6.5" and 8" in-ceiling Speakers	
BZ10	Tool-less Bayonet Ring and Round Grille for Director 10" in-ceiling Speakers	
BZ10-8	Tool-less Bayonet Ring and Round Grille for Director 10" in-ceiling Speakers	
BZ10SQ	Tool-less Bayonet Ring and Square Grille for Director 10" in-ceiling Speakers	
BZ10SQ-8	Tool-less Bayonet Ring and Square Grille for Director 10" in-ceiling Speakers	

Amazingly Quick

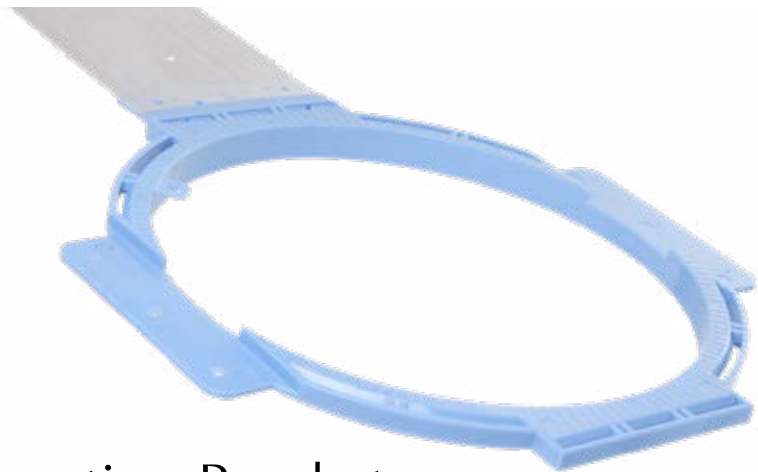
It is important when installing a loudspeaker in the ceiling that it be stable and secure, restricting the vibration of the assembly and limiting transfer of energy into the wall.



New Construction Bracket

For new home construction, these brackets indicate the exact position and size of hole to be cut by the drywall. When the ceiling is finished, the speaker's bayonet ring slides easily into the hole with the bracket in place and the spring-loaded clips are hand squeezed to secure the ring. The speaker is then inserted and twisted to complete the installation.

Model	Part Number	Description	UNIT
BR10	BRK100N	Director Collection 10" New Construction Bracket for D100 Series Speakers	
BR68	BRK800N	Director Collection 6.5"/8" New Construction Bracket For The D60/D80, Thin-fit and E-60 Series Speakers	
BR3	BRK300N	Director Collection 3" New Construction Bracket for D30 Series Speakers	
BR5	BRK5000	Director Collection 5" New Construction Bracket for D50 Series Speakers	
BRP8	BRK810N	Producer Collection 8" New Construction Bracket For The P80 Series Speakers	
BRP6	BRK610N	Producer Collection 6.5" New Construction Bracket For The P60 Series and E60 Series Speakers	
BRL30	BRKL3000N	Composer Collection Rectangular New Construction Bracket For The THTR60 Series Speakers	
BRL13	BRKL1300N	Composer Collection Rectangular New Construction Bracket For The CIW60 Series Speakers	
BRL15	BRKLI500	Composer Collection Rectangular New Construction Bracket For The LCR60 Series Speakers	
BRL10	BRKLI1000N	Composer Collection Rectangular New Construction Bracket For The LCR30 Series Speakers	
BRL12	BRKLI200N	Composer Collection Rectangular New Construction Bracket For The C60 Series Speakers	



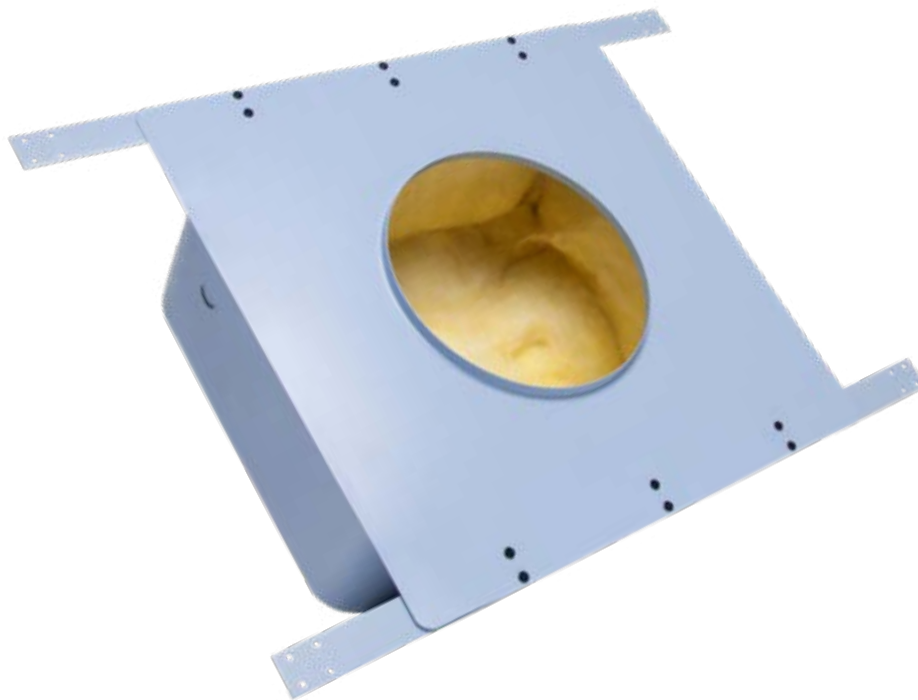
Reusable New Construction Bracket

Model	Description	UNIT
REBR68	Director Collection 6.5"/8" Reusable New Construction Bracket for the D60/D80, Thin-fit and E-Series Speakers (10-pack of Brackets and 20 Wings)	
REBRW20	Director Collection 6.5"/8" Reusable New Construction Wings for the REBR68 Bracket	

Sound Enclosure

These sturdy metal enclosures meet or exceed 1 hour fire ratings for use in multi-unit dwellings and whenever speakers are mounted in firewalls; they will contain fire, gas, smoke and heat within the enclosure for up to one hour. Not only do they allow residential contractors to meet building codes but they also diminish the transfer of sound through the walls from one room to another.

Model	Part Number	Description	UNIT
FB10	FBXD10000R	Sound Enclosure for Director 10" speakers and Celestial 10" Speakers	
FBD82X6	FBXD68000R	Sound Enclosure for Director 6" speakers, Director D80, D82, BOC 6" Speakers, and BOC82	
FB82X8	FBXC6800R	Sound Enclosure for Director 6" and 8" speakers. Also fits Bang & Olufsen Celestial 6.5" and 8" Speakers	
FBP8	FBXP8010R	Sound Enclosure for Producer 8" Speakers	
FBP6	FBXP6010R	Sound Enclosure for Producer 6.5" Speakers	
FB10S	FBXL1000	Sound Enclosure for Composer Collection 10" Tall LCR30 In-Wall Speakers	
FB15S	FBXL1500	Sound Enclosure for Composer Collection 15" Tall LCR60 In-Wall Speakers	
FB12S	FBXC1200	Sound Enclosure for Composer Collection 12" Tall C60 In-Wall Speakers	



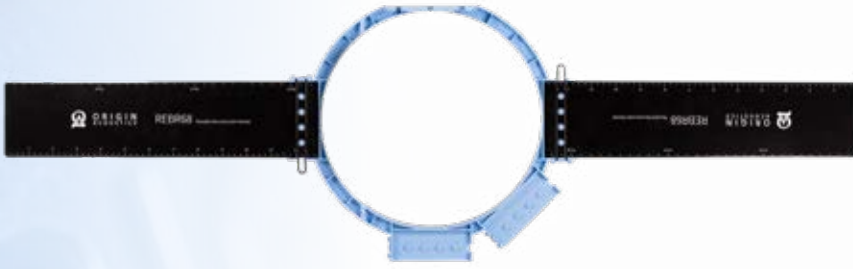


ENVIRONMENTAL RESPECT

Reconstruction Bracket (Patent Pending)

Installers that work in the production home market go through thousands of new-construction brackets every year. Since these brackets are obsolete once the drywaller cuts the hole, leaving the plastic behind is unnecessary and wasteful. In a move to show greater respect to the planet, Origin has created the Reconstruction Bracket (Patent Pending). The centre ring is attached to the wings with a spring-clip and post mechanism that allows the ring to be detached, folded and removed after the drywaller cuts the hole. The cardboard wings themselves are left in the ceiling. The centre ring can then be attached to a new set of wings that are sold separately reusing the plastic and reducing the cost of the brackets for the next installation.

Model	Description	UNIT
REBR68	Director Collection 6.5"/8" Reusable New Construction Bracket for the D60/D80, Thin-fit and E-Series Speakers (10-pack of Brackets and 20 Wings)	
REBRW20	Director Collection 6.5"/8" Reusable New Construction Wings for the REBR68 Bracket	



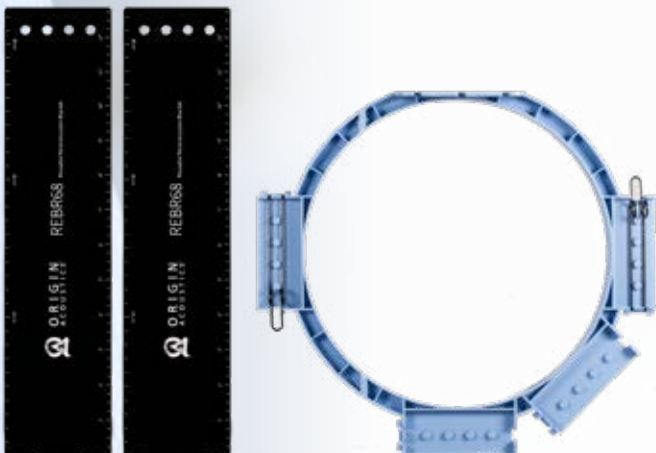
The Reconstruction Bracket is made up of the centre convertible ring and the cardboard wings.



Once drywall has been mounted and the speaker hole is cut, the centre ring can be detached from the cardboard wings by reaching up inside the ceiling and squeezing the spring clips.



The convertible ring folds along the hinge allowing it to be easily removed from the ceiling leaving the cardboard wings behind.



The centre ring is now ready for a new set of wings that are snapped in place and secured with the spring clips.

Director Adapter Ring

Because the Origin Tool-less installation system dramatically reduces the footprint of our speakers, in comparison to other manufacturers, there are times the previous hole cut for another branded speaker may be too large for the Director 6/8" models. This adapter ring inserts into a Director 10" bayonet ring reducing the internal dimension and allowing any of the Director 8" or 6" models to be installed. The adapter ring can be ordered by itself or in a kit that includes a 10" bayonet ring and 10" grille.





4

Complete Installed Speaker

Director Adapter Ring & Adapter Ring kits

Model	Description	UNIT
DA6810	Adapter Ring for Director 6.5/8" In-ceiling Speakers to Work in a 10" Bayonet Ring (Adapter Only)	
DA6810K	Adapter Ring Plus BZ10 for Director 6.5/8" Speakers to Work in a 10" Bayonet Ring (Adapter, Bayonet Ring and Round Grille)	
DA6810SQK	Adapter Ring plus BZ10 for Director 6.5/8" speakers to work in a 10" Bayonet Ring (Adapter, Bayonet Ring and Square Grille)	
DA6810WXK	Adapter Ring plus BZ10 for Director 6.5/8" speakers to work in a 10" Bayonet Ring with Weather-X™ Coating (Adapter, Bayonet Ring and Round Grille)	
DA6810SQWXK	Adapter Ring plus BZ10 for Director 6.5/8" speakers to Work in a 10" Bayonet Ring with Weather-X™ Coating (Adapter, Bayonet Ring and Square Grille)	

In-Ceiling & In-Wall



D109



D107



D105



D89



D87



D85



D83DT/SUR



D83



D83A



D81



D69



D67



D65



D63DT/SUR



D63



D61DT



D61-6



D59



D57



D39



P80



P80DT



P61



P60DT



P60



TF64DT



TF36



TF34



E60-6



THTR69



THTR67



C68



C66



C64



C62



CIW61



CIW63



CIW65



LCR69



LCR67



LCR65



LCR38



LCR36

Subwoofers



DSUBF68



DSUBF5



DSUBF3



CSUB10R



CSUB10NCE



CSUB10N



SUBDD12EQ



SUBD12EQ



SUBD10EQ



SUBD8EQ



SUBV10

Outdoors



LS64



LS44



OSUB12



OSUB10



OSUB8



OSUB10P



OS66



OS64DT



OS64



OS56



OS54DT



OS54



AS41SYS



AS4SAT

Amplifiers



AV850



DSP3-700

Soundbars



SB3



SB1

The Founders

In 2012, the three prior CEOs of SpeakerCraft, Ken, Ed and Jeremy started inventing together again. The three partners have reunited under the all too appropriate moniker, Origin Acoustics. Yes, the originals are back. They have returned to invent and create the worlds best sounding loudspeakers. Bringing an aggregate of over 100 years of experience to this effort, they are designing, developing and innovating new products and technologies that are setting the industry standard once again.



Jeremy Burkhardt *CEO*

He started his career as a custom installer, and then became a successful AV independent retailer where he learned deficiencies in products and installation practices that drove him to design innovative time-saving products and dealer programs that revolutionized the custom installation industry. He and his business partners founded, developed and grew SpeakerCraft into the industry's largest architectural speaker manufacturer and brand. For over two decades Jeremy has actively contributed to the growth and development of the residential architectural custom electronics industry. He served on the Board of Directors for CEDIA and regularly contributes articles and lectures to a variety of industry trade publications and educational events worldwide.



Ed Haase *COO*

Co-Inventing the in-wall speaker with his high school buddy Ken Humphreys in 1976, Ed has been responsible for many inventions and patents throughout his exuberant career in the speaker industry. After Ken left the original SpeakerCraft in 1989, Ed continued to run the company and eventually hired on a fervent young man by the name of Jeremy Burkhardt. In 1993, Ed and Jeremy went on to launch the largest custom installation speaker company the world has ever seen. A true pioneer of the custom installation speaker business, Ed has over 10 active patents on some of the most innovative speaker technologies. When not innovating new products, Ed loves to be almost anywhere in nature hiking, biking or playing golf and tennis.



Ken Humphreys *CTO*

Also known as the inventor of the in-wall speaker, Ken started SpeakerCraft after college with his high school buddy Ed Haase back in 1976. They started out putting speakers into RV's and manufactured speakers for Bang & Olufsen, Niles, Polk, Sonance, and more. Ken left SpeakerCraft in 1989 to concentrate on his family up until the kids didn't want him around so much. He started his own small retail speaker shop in 1996. Responsible for many of the cutting edge patents of Origin speakers, nobody has as much experience in innovating architectural speakers as Ken. When he's not working around the clock to make sure Origin's products exceed the expectations of audiophiles, you can find Ken enjoying himself a nice cold craft brew.