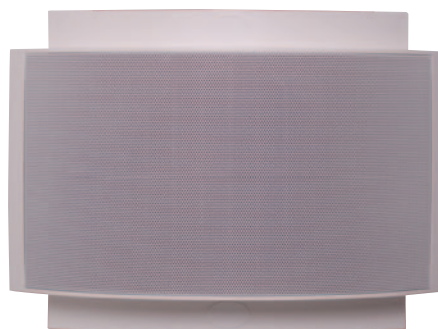


Product Guide**C 0888** 165mm (6.5") 100V 10W Coaxial Surface Mount Speaker

C 0888 165mm (6.5") Surface Mount Coaxial Speaker

- ✓ Stylish architectural enclosure.
- ✓ High performance two way coaxial driver.
- ✓ Concealed fixings for a neat installation.
- ✓ High quality speaker driver developed for BGM, paging and emergency warning applications.
- ✓ UV stabilised ABS cabinet.
- ✓ Neutral white finish.

**Application**

This wall mount cabinet speaker offers real innovation in both design and performance. Ideal for shops, galleries, restaurants, hotels, offices, etc. Able to be mounted either vertically or horizontally, this cabinet is ideal for applications requiring both performance and a touch of style.

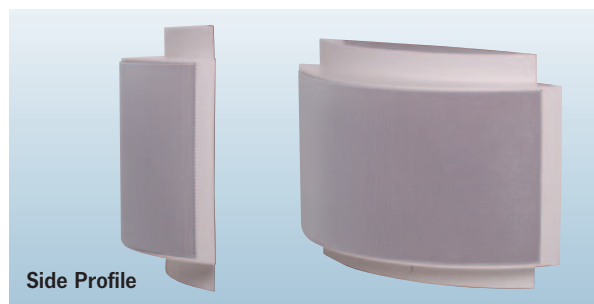
The cabinet is moulded from high impact ABS and supplied with a powdercoated steel mesh grill.

A 165mm (6.5") 10W high performance coaxial loudspeaker is fitted ensuring high quality paging and background music. The bass response has been extended to give depth and warmth to both music and speech.

About Redback® Speaker Drivers

Each custom designed speaker and transformer combination has been specifically engineered to ensure a wide frequency range and dispersion angle, plus a high sound pressure level (SPL) ensuring excellent music and speech intelligibility; which is critical for emergency paging applications.

Each transformer is fitted with multiple power tapings which are selected via the tabs on the internal transformer.

Installation Guidelines**Side Profile**

The cabinet may be mounted in vertical or horizontal orientation. Fixings are concealed behind flush mount caps. To prevent UV degradation the ABS plastic has added polymer, allowing speakers to be installed in areas where direct sunlight is common.

Connection is via three way terminal block (pos., neg. & earth).

Testing

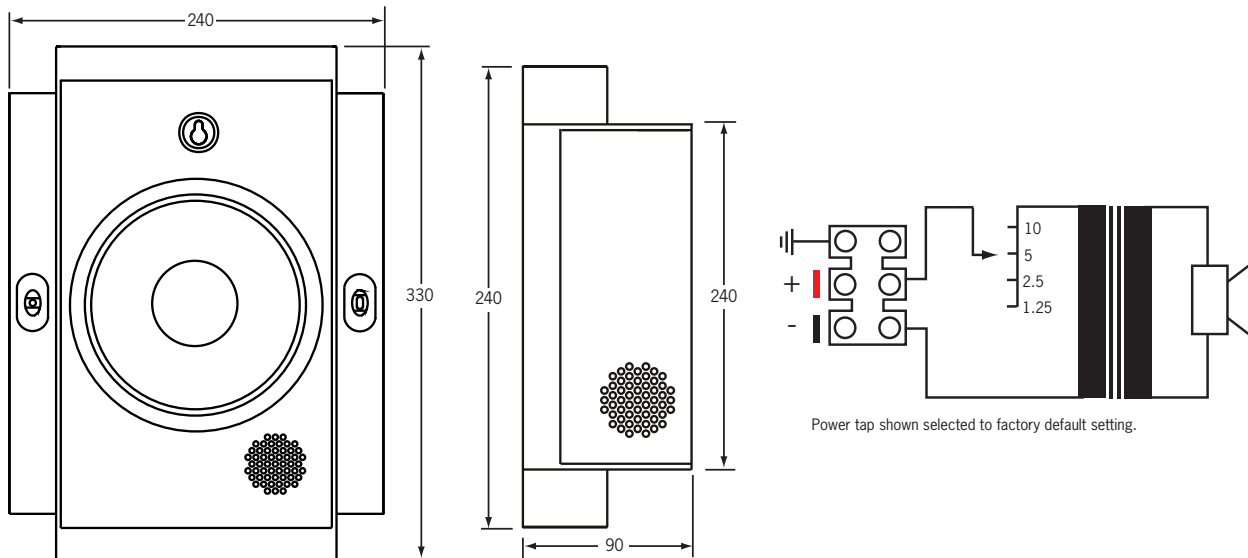
Redback® drivers are engineered and manufactured to stringent specifications ensuring maximum reliability under all operating conditions. Each driver has a power rating well above the max tapping of the transformer, ensuring reliable operation and excellent longevity. A strict quality control procedure is employed during every step of the manufacturing process. Finally, every finished speaker is 100% QC checked prior to shipping.

Product Guide

C 0888 165mm (6.5") 100V 10W Coaxial Surface Mount Speaker



Dimensions & Transformer Detail



Power tap shown selected to factory default setting.

Specifications

Electrical

Power taps:	1.25 ,2.5 , 5 ,10W
SPL 1W @ 1m:	96dB @ 1kHz (+/- 2dB)
SPL Max:	104dB @ Full power octave bandwidth
Frequency response:	160Hz - 18kHz
Dispersion (1kHz/2kHz):	180° / 120°
Directivity Q Factor (1kHz/2kHz):	3.6 / 5.8
Connection:	3 way terminal block

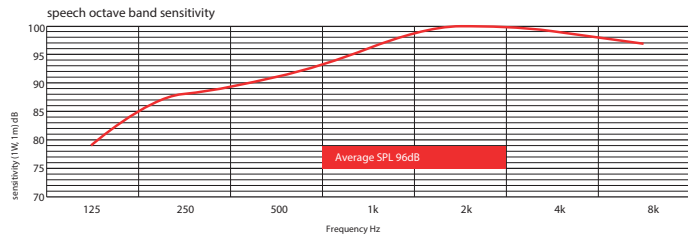
Mechanical

Grille material:	Steel mesh grille
Outer construction:	UV stabilised ABS
Driver construction:	Polypropylene woofer, mylar dome tweeter
Overall weight:	1.2kg
Colour:	White

Environmental

Operating temperature:	-10°C to +60°C
------------------------	----------------

Frequency Response (SPL 1W @ 1m)



Architect Specifications

The unit shall be the Redback model C 0888 or equal and approved. The enclosure shall be ported with an open back and constructed of high impact ABS plastic, treated with UV inhibitors. The bowed grille will be manufactured from mild steel construction with an epoxy coated finish. The speaker assembly shall comprise of a 160mm diameter bass/mid-range treated coned loudspeaker and shall be fitted with a 6 watt/100 volt line factory fitted transformer with the power taps clearly marked on the assembly. The C 0888 will be suitable for voice alarm applications and will be supplied with ceramic terminals to take 2 x 2.5mm² conductors and a thermal fuse rated at 150°. The loudspeaker shall have a wide-angle dispersion. The cone shall be a damped, high compliance type with a smooth extended frequency response.