

**Product Guide****C 2117A** 200mm (8") 100V 15W High Output Driver**C 2117A** High Output Public Address EWIS Driver

- ✓ High power 15W output for increased SPL
- ✓ Excellent speech intelligibility
- ✓ Side bracket mount transformer mounting for installations with limited recess space.
- ✓ High quality speaker driver developed for BGM, paging and emergency warning applications
- ✓ Fitted with 4 way wire protect terminal block for loop in, loop out wiring as required by Australian Standards.
- ✓ Fitted with supervisory capacitor for line monitoring.
- ✓ 5 year warranty.

**Application**

The C 2117A is designed for EWIS (fire & evacuation) installations with high SPL output requirements. It is ideal for use in PA and fire evacuation systems where a high level of SPL and speech intelligibility is essential. The bracket mounted transformer mounting allows mounting in ceilings with limited recess space.

**Testing**

Redback® drivers are subject to strenuous factory testing reducing the risk of unit failure or performance reduction over time. Each driver has a power rating well above the max tapping of the transformer, ensuring reliable operation and excellent longevity.

**Emergency Warning & Intercommunications Systems (EWIS)**

This speaker is designed for use in installations designed to deliver both verbal and tone announcements to occupants for evacuation and alarm conditions.

It is fitted with line monitoring capacitor and 4 way wire protect terminal connection.

**Installation Guidelines**

The C 2117A is fitted with a 4 way wire protect screw terminal block. This is suitable for loop in, loop out cabling.

To attach the driver to a speaker grille use C 0835 grille fixing clips. For installation in gypsum or plasterboard ceilings use C 0825 Gypsee® screws. See "additional installation accessories" over the page.

**About Redback® Speaker Drivers**

Each custom designed speaker and transformer combination has been specifically engineered to ensure a wide frequency range and dispersion angle, plus a high sound pressure level (SPL) ensuring excellent music and speech intelligibility; which is highly desirable for emergency paging applications.

Redback® drivers exhibit optimum frequency response and efficiency for BGM, paging and EWIS applications. The transformers are wound on professional grade grain oriented steel cores for high efficiency and extended frequency response.

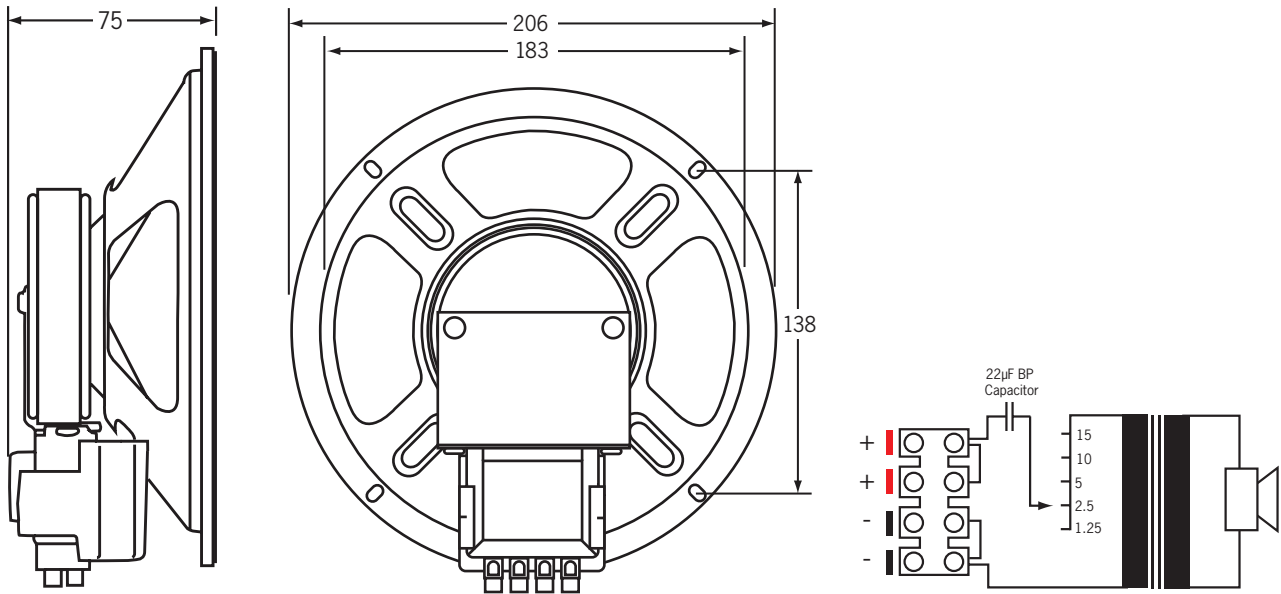
Each transformer is fitted with multiple power tapings which are selected via a tab on the side of the transformer.

## Product Guide

**C 2117A** 200mm (8") 100V 15W High Output Driver



### Dimensions & Transformer Detail



Power tap shown selected to factory default setting.

### Specifications

#### Electrical

Power taps:	1.25, 2.5, 5, 10, 15W
SPL 1W @ 1m:	95dB @ 1kHz (+/- 2dB)
Frequency response:	80Hz-12kHz
Connection:	4 way terminal block + 22uF bipolar capacitor

#### Mechanical

Driver construction:	Paper cone
Ceiling cutout:	185mm
Mounting depth:	75mm
Overall weight:	1.4kg

#### Environmental

Operating temperature:	-25°C to +55°C
Relative humidity:	< 95%

#### Additional Installation Accessories

- C 0805** 200mm (8") white slimline ceiling grille
- C 0835** Pk100 speaker grille fixing clips
- C 0825** Pk100 Gypsee® gypsum/plasterboard screws

### Architect Specifications

The speaker shall be of 200mm diameter and be fitted with a 100V transformer with power taps of 15W, 10W, 5W, 2.5W and 1.25W. It shall have a SPL of 95dB @ 1m. The transformer shall be fitted with a 4 way wire protect terminal block for cable connection and 22uF bipolar capacitor for line monitoring. The speaker shall be a Redback model C 2117A.

### Frequency Response (SPL 1W @ 0.5m)

